

TELES **HYDRAULICS**

**QUALITY AND SAFETY,
YOU FIND HERE!**



HYDRAULIC

CYLINDERS
MANUFACTURERS

TELES **HYDRAULICS**

**QUALITY AND SAFETY,
YOU FIND HERE!**



OVER 16 YEARS OF EXPERIENCE



WE ARE MEMBER OF THE FEMA ASSOCIATION



PRESENCE IN MANY COUNTRIES

PRODUCT PREVIEW



PAGE 13

**CROSS TUBE
CYLINDERS**



PAGE 19

**AG CLEVIS
CYLINDERS**



PAGE 23

**CLEVIS END
CYLINDERS**



PAGE 28

TIE-ROD CYLINDERS



PAGE 31

PIN EYE CYLINDERS



PAGE 35

**TRAILER HOIST
CYLINDERS**



PAGE 37

**SWIVEL EYE
CYLINDERS**



PAGE 40

TANG CYLINDERS



PAGE 44

LOADER CYLINDERS



PAGE 47

**LOG SPLITTER
CYLINDERS**



PAGE 49

**SNOW PLOW
CYLINDERS**



PAGE 53

**UNIVERSAL
CYLINDERS**

ABOUT US



OUR HISTORY

Early stories often recount back in 2004 within Pressure Compressores, manufacturing the first prototypes of hydraulic cylinders for road trailers in a tiny space, since then, we have been improving our products until the start of the activities of the company in 2007 as Teles Automotiva.

In 2009, we acquired our facility in Maringa-Parana, Brazil. A few years later, in 2012, we made our most significant investment to date, planning a larger, new facility in Paiçandu-Parana, where our headquarters are still located.



First prototypes in 2004

Understanding that we were masters in hydraulic cylinder solutions, we decided to change our name to Teles Hidráulica, and nowadays we have 215.278 sq ft of area and 139.931 sq ft of built area, manufacturing over 10.000 different models of cylinders, utilized in equipment in different acting lines such as:



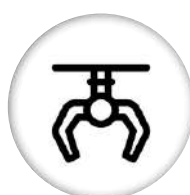
Agriculture line



Sugar Cane Processing



Civil Construction



Forestry



Trailers



Load Moving and Lifting



Today **Teles Hidráulica** specializes in producing high-performance standard and innovative custom hydraulic cylinders, dedicated to meeting each customer's needs, through qualified engineers and the latest generation software, guaranteeing quality and safety in the development and execution of projects.



Mission

Offer to the market hydraulic cylinders that generate value for customers, employees, society, and stakeholders.



Vision

To be recognized in the market as a quality reference in hydraulic cylinder solutions.



Values

Integrity in our relationships with customers, employees, and the society.



Quality Policy

To act with excellence in providing solutions in hydraulic cylinders, satisfying the needs of customers with the training of its employees, active leadership, technological process and always aiming for the continuous improvement of its management system.

PRODUCTION



AVAILABLE RAW MATERIALS

Our cylinders are manufactured with 100% certified national and imported materials, of the highest quality.

CUSTOMIZED PROJECTS

Attending personalized measurements, being present on each each detail, from the preliminary phases till the production.



CNC ROBOTIC LATHE CENTERS

To ensure absolute cutting precision in every project, increasing safety and reducing production cycle time.

WELDING ROBOTS

A robotic welding system that provides consistency and repeatability, significantly increasing the productivity and quality of each part.





SKIVING BURNISHING

Ensures precision in the geometry of the parts, greater durability of seals, concentricity of movements and corrects possible millimetric errors, avoiding ovalization.

100% TESTED CYLINDERS

We assemble our cylinders, testing all of them, one by one, applying functional tests and load simulations, with very strict quality controls.



AUTOMATIZED PAINTING

Using high performance materials and technology, our painting process is carried out for professionals, with several and rigorous inspection methods.

WAREHOUSE (STRATEGIC STOCK)

Our shipping department always takes the best care of your hydraulic cylinders, packaging and storing them strategically to optimize inventory and ensure on-time delivery.



QUALITY CONTROL

WE ARE CERTIFIED BY ISO 9001:2015 STANDARD



Teles Hydraulics Hold Certificate No: FM 698736 and operates a Quality Management System which complies with the requirements of ISO 9001:2015 for the following scope:

Development, production and sales of hydraulic cylinders for agricultural, industrial and road equipment.

We are committed to this international quality management system, understanding the importance of ensuring high-quality products and exceptional service, always focused on customer satisfaction.

QUALITY CONTROL

Performed at every stage of the manufacturing process, is determined by the following principles:

- Understanding and meeting the needs of our clients.
- Examination of raw material before processing.
- Development and improvement of production technologies.
- Increase efficiency of employees to meet quality requirements through ongoing qualification training.
- Precise procedure according to customer approved engineering projects.
- Quality control of all materials used in manufacturing.
- Dimensional control at every stage of production.
- Product testing that simulates the required working conditions.
- 100% product testing for required working pressure, (one by one).
- Location ISO 9001:2015 compliant and in continuous improvement.
- Visual inspection at every product stage.



BENEFITS OF TELES HYDRAULICS

Engineering advises with an innovative vision.

Custom-made OEM

The highest software technology.

High quality european and brazilian materials

Certified under ISO 9001:2015.

Exceptional quality control

Standar-size hydraulic components

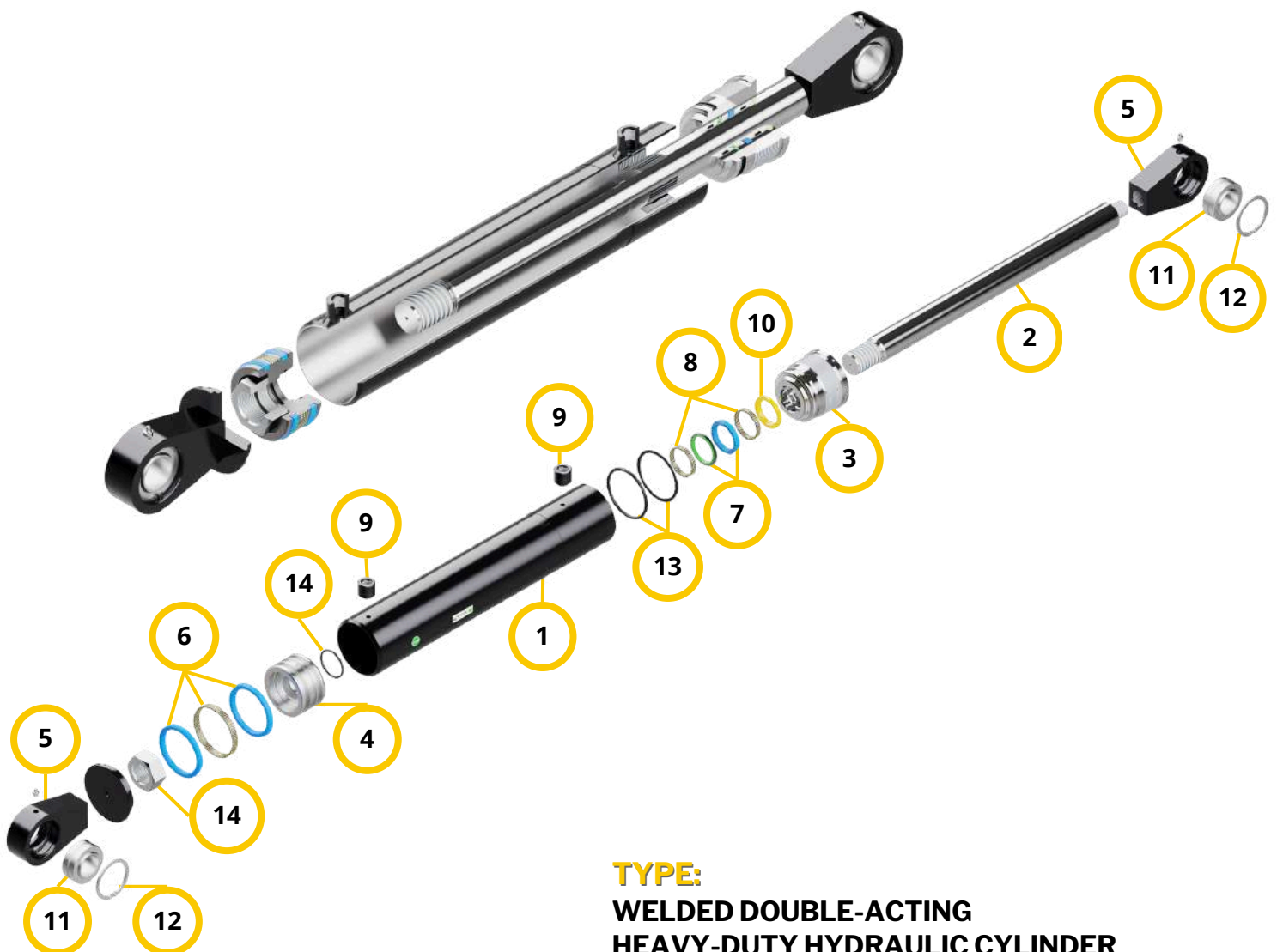
2 years limited warranty

TECHNOLOGY

At Teles Hydraulics Cylinders, we combine the best of European and Brazilian practices to ensure the highest quality products. Our steel pistons and glands with nylon glass guide rings and five-component compact piston seals provide superior durability and extended life expectancy for every piece.

This design increases durability in comparison with other hydraulic cylinder options on the market. All of our cylinders undergo a 150% working pressure test prior to being made available for sale.

We have in stock a variety of standard welded hydraulic cylinders with Clevis, Cross Tube, Pin Eye, Tang, Swivel Eye ends, and others. Follow below a detailed overview of our standard cylinders:



TYPE:
**WELDED DOUBLE-ACTING
HEAVY-DUTY HYDRAULIC CYLINDER**

1. TUBE

High-honed seamless tube with internal burnish (SAE 1026 steel).

2. ROD

High-tensile ground and polished hard chrome-plated rod (SAE 1045 steel).

3. GLAND

Precision threaded gland with wear rings for long life (SAE 1020 steel).

4. PISTON

High tensile steel for heavy-duty applications (SAE 1020 steel).

5. SWIVEL EYE ENDS

Durable steel items (SAE 1020 steel).

6. PISTON SEALS

Top-quality compact seals for excellent performance, high-pressure, high-temperature resistance.

7. ROD SEALS

Top-quality U-cup polyurethane rod seal with inner O-ring, high-pressure, high-temperature resistance

8. GUIDE RINGS

POM-C wear rings and polyurethane wiper, for high sliding performance with low friction.

9. PIPE

SAE O-ring

10. WIPER

High-quality polyurethane wiper

11. SWIVEL ITEMS

Bearings

12. CLIPS

Bearing securing clip

13. SEAL

Sealing O-rings

14. NUTS

Durable steel items (SAE 1020 steel).

HYDRAULIC CYLINDERS

Teles Hydraulics cylinders are designed specifically for different acting lines ranging from construction, agriculture, sugar cane, forestry, trailer, and more. All of our cylinders are manufactured in our main facility in Brazil, under an ISO 9001:2015 quality certificate and in accordance with US industrial standards.

STANDARDS OPTIONS:

- **Bore:** 1.5" - 6"
- **Rod:** 1" - 3" Ø, chrome plated rod SAE 1045 steel.
- **Stroke:** 4" - 60" inches
- **Type:** welded, tie-rod
- **Rod End:** Cross tube, clevis, pin eye, swivel eye.
- **Action:** Double acting, single acting.



CUSTOMIZATION

CUSTOM OPTIONS AVAILABLE

(No min. order required):

CYLINDER BORE DIAMETER:

From 1" to 8"

CYLINDER ROD DIAMETER:

From 0.5" to 5"

CYLINDER STROKE LENGTH:

From 1" to 120" (10 feet)

OPERATING PRESSURE:

From 1500 PSI to 5000 PSI

HYDRAULIC ROD OPTIONS:

Chrome plated, double chrome, triple chrome, nickel chrome, stainless steel, and induction hardened options.

MOUNTING OPTIONS:

Essentially any custom flanges your application might need.

SEALS:

Made up to the cylinder specs, depending on the cycle usage.

CYLINDER LIFESPAN:

Made up according to the customer's requirements.

TEMPERATURE RANGE:

From -65 F to +300 F

CYLINDER CUSHIONS:

Fixed and adjustable cushions, rod, and welded sides cushions.

PRIVATE LABEL:

Is available upon request, and will be branded according to customer's needs.

PACKAGING:

From cardboard boxes and bubble wrap to custom logo & engraving options.

PAINT AND FINISH:

Standard PU automobile, and high-temperature options for paint of any RAL color.

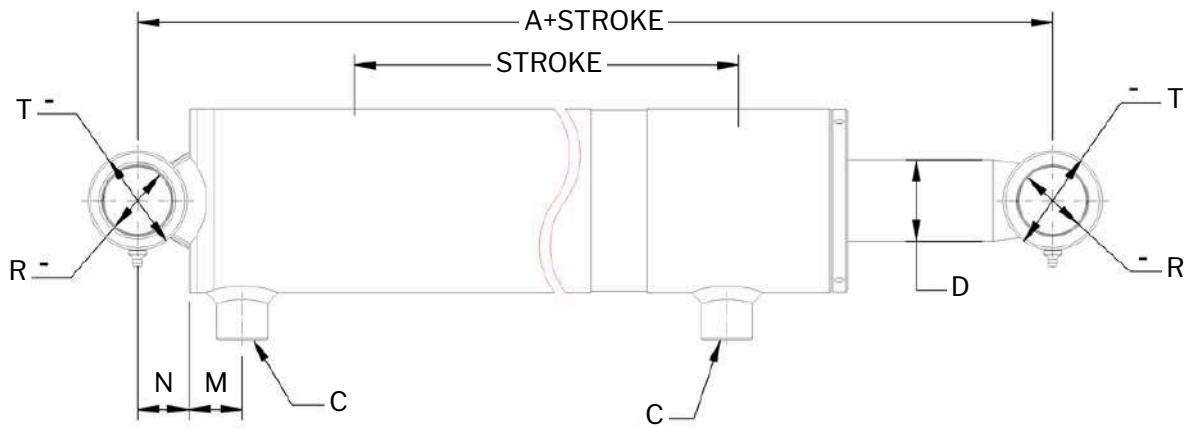
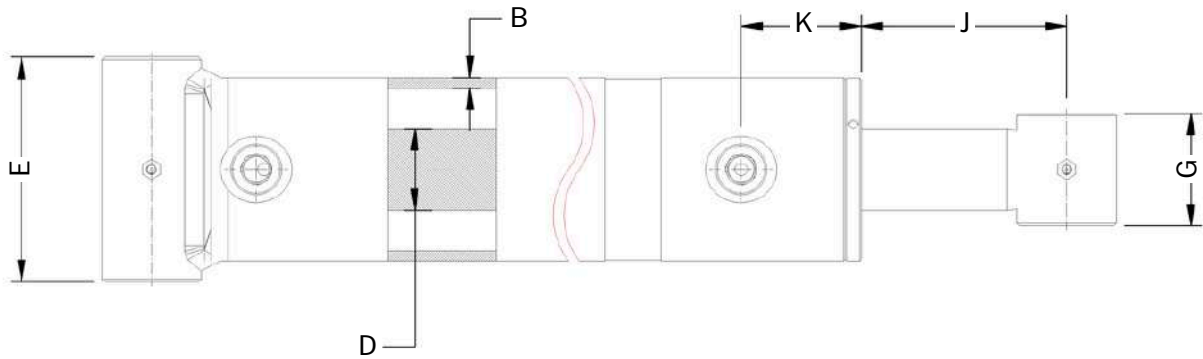


CROSS TUBE

WELDED CYLINDER 3500 PSI

SPECIFICATIONS	
Bore:	1.5 - 6"
Type:	Welded hydraulic cylinder
Action:	Double acting
Ends:	Welded cross tube
Rod:	Standard chrome plated rod steel 1045
Stroke:	4" - 60"
Pressure:	3500 PSI
Color:	Black





CROSS TUBE WELDED - DOUBLE ACTING / 3500 PSI

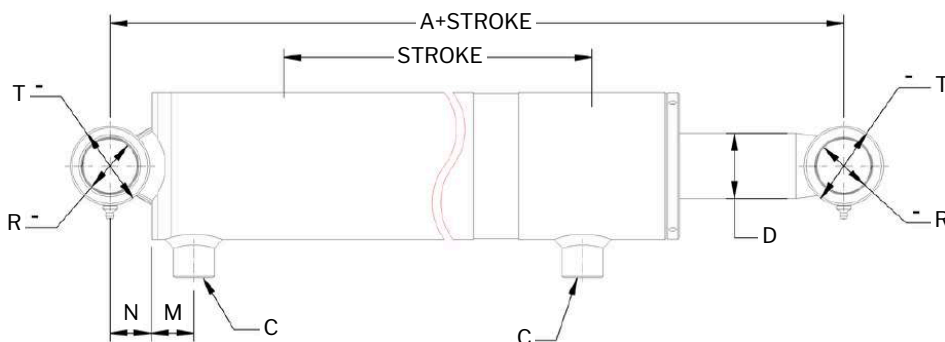
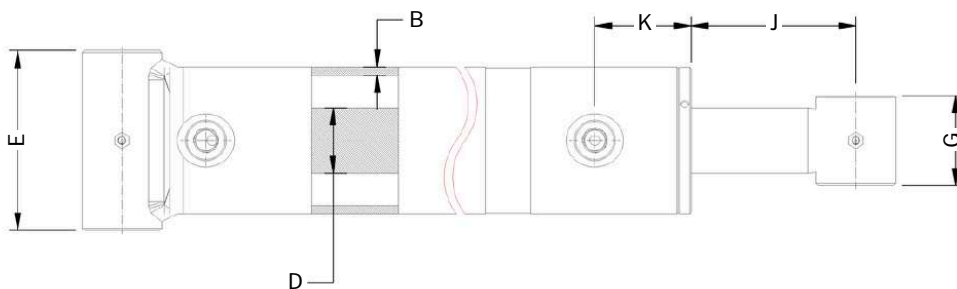
BORE	A	B	C	D	E	G	J		K	M	N	R	T
							STROKE 4...20	STROKE 22...36					
1.5"	8.0"	.19"	SAE 6	1.0"	2.0"	2.0"	3.17"	N/A	2.17"	.83"	.63"	.76"	1.25"
2"	8.0"	.19"	SAE 6	1.25"	2.75"	2.25"	2.76"	1.95"	2.05"	.83"	.75"	1.02"	1.5"
2.5"	8.0"	.19"	SAE 8	1.5"	3.25"	2.25"	2.74"	1.95"	2.05"	.83"	.75"	1.02"	1.5"
3"	8.0"	.19"	SAE 8	1.5"	3.75"	2.25"	2.54"	1.75"	2.13"	.85"	.75"	1.02"	1.5"
3.5"	10.0"	.19"	SAE 8	1.75"	4.25"	2.25"	4.27"	3.28"	2.13"	.85"	1.0"	1.26"	2.0"
4"	10.0"	.25"	SAE 8	2.0"	4.75"	2.5"	3.76"	2.78"	2.48"	.85"	1.13"	1.52"	2.25"
5"	11.0"	.25"	SAE 12	2.5"	5.75"	4.0"	3.3"	3.3"	3.05"	.98"	1.23"	1.52"	2.5"
6"	11.0"	.31"	SAE 12	3.0"	6.75"	4.0"	N/A	2.92"	3.39"	1.06"	1.2"	1.52"	2.5"

1.5" BORE		CROSS TUBE WELDED - DOUBLE ACTING / 3500 PSI							
SKU	BORE (INCH)	STROKE (INCH)	ROD Ø (INCH)	RETRACTED (INCH)	EXTENDED (INCH)	PIN Ø (INCH)	PORT SIZE	COLUMN LOAD	WEIGHT LBS
US150010000004	1.5	4	1	12	16	0.75	SAE 6	5,300	7
US150010000006	1.5	6	1	14	20	0.75	SAE 6	5,300	8
US150010000008	1.5	8	1	16	24	0.75	SAE 6	5,300	9
US150010000010	1.5	10	1	18	28	0.75	SAE 6	5,300	10
US150010000012	1.5	12	1	20	32	0.75	SAE 6	5,300	11
US150010000014	1.5	14	1	22	36	0.75	SAE 6	5,300	12
US150010000016	1.5	16	1	24	40	0.75	SAE 6	5,300	13
US150010000018	1.5	18	1	26	44	0.75	SAE 6	5,300	14
US150010000020	1.5	20	1	28	48	0.75	SAE 6	5,300	15
US150010000022	1.5	22	1	30	52	0.75	SAE 6	4,620	16
US150010000024	1.5	24	1	32	56	0.75	SAE 6	4,210	18

2" BORE		CROSS TUBE WELDED - DOUBLE ACTING / 3500 PSI							
SKU	BORE (INCH)	STROKE (INCH)	ROD Ø (INCH)	RETRACTED (INCH)	EXTENDED (INCH)	PIN Ø (INCH)	PORT SIZE	COLUMN LOAD	WEIGHT LBS
US200012500004	2	4	1.25	12	16	1	SAE 6	9,400	10
US200012500006	2	6	1.25	14	20	1	SAE 6	9,400	12
US200012500008	2	8	1.25	16	24	1	SAE 6	9,400	13
US200012500010	2	10	1.25	18	28	1	SAE 6	9,400	15
US200012500012	2	12	1.25	20	32	1	SAE 6	9,400	16
US200012500014	2	14	1.25	22	36	1	SAE 6	9,400	18
US200012500016	2	16	1.25	24	40	1	SAE 6	9,400	19
US200012500018	2	18	1.25	26	44	1	SAE 6	9,400	21
US200012500020	2	20	1.25	28	48	1	SAE 6	9,400	22
US200012500022	2	22	1.25	30	52	1	SAE 6	8,800	24
US200012500024	2	24	1.25	32	56	1	SAE 6	8,400	25
US200012500026	2	26	1.25	34	60	1	SAE 6	7,200	26
US200012500028	2	28	1.25	36	64	1	SAE 6	6,200	28
US200012500030	2	30	1.25	38	68	1	SAE 6	5,700	30
US200012500032	2	32	1.25	40	72	1	SAE 6	5,200	31
US200012500036	2	36	1.25	44	80	1	SAE 6	4,100	34
US200012500048	2	48	1.25	56	104	1	SAE 6	3,200	44



2.5" BORE		CROSS TUBE WELDED - DOUBLE ACTING / 3500 PSI							
SKU	BORE (INCH)	STROKE (INCH)	ROD Ø (INCH)	RETRACTED (INCH)	EXTENDED (INCH)	PIN Ø (INCH)	PORT SIZE	COLUMN LOAD	WEIGHT LBS
US250015000004	2.5	4	1.5	12	16	1	SAE 8	14,700	14
US250015000006	2.5	6	1.5	14	20	1	SAE 8	14,700	16
US250015000008	2.5	8	1.5	16	24	1	SAE 8	14,700	18
US250015000010	2.5	10	1.5	18	28	1	SAE 8	14,700	20
US250015000012	2.5	12	1.5	20	32	1	SAE 8	14,700	22
US250015000014	2.5	14	1.5	22	36	1	SAE 8	14,700	24
US250015000016	2.5	16	1.5	24	40	1	SAE 8	14,700	25
US250015000018	2.5	18	1.5	26	44	1	SAE 8	14,700	27
US250015000020	2.5	20	1.5	28	48	1	SAE 8	14,700	30
US250015000022	2.5	22	1.5	30	52	1	SAE 8	14,700	32
US250015000024	2.5	24	1.5	32	56	1	SAE 8	14,700	34
US250015000026	2.5	26	1.5	34	60	1	SAE 8	13,700	36
US250015000028	2.5	28	1.5	36	64	1	SAE 8	12,700	38
US250015000030	2.5	30	1.5	38	68	1	SAE 8	11,700	40
US250015000032	2.5	32	1.5	40	72	1	SAE 8	10,600	42
US250015000036	2.5	36	1.5	44	80	1	SAE 8	8,400	46
US250015000040	2.5	40	1.5	48	88	1	SAE 8	6,200	50
US250015000042	2.5	42	1.5	50	92	1	SAE 8	6,200	52
US250015000048	2.5	48	1.5	56	104	1	SAE 8	5,700	59
US250015000060	2.5	60	1.5	68	128	1	SAE 8	4,200	67



3" BORE		CROSS TUBE WELDED - DOUBLE ACTING / 3500 PSI							
SKU	BORE (INCH)	STROKE (INCH)	ROD Ø (INCH)	RETRACTED (INCH)	EXTENDED (INCH)	PIN Ø (INCH)	PORT SIZE	COLUMN LOAD	WEIGHT LBS
US300015000004	3	4	1.5	12	16	1	SAE 8	21,000	18
US300015000006	3	6	1.5	14	20	1	SAE 8	21,000	20
US300015000008	3	8	1.5	16	24	1	SAE 8	21,000	22
US300015000010	3	10	1.5	18	28	1	SAE 8	21,000	24
US300015000012	3	12	1.5	20	32	1	SAE 8	21,000	26
US300015000014	3	14	1.5	22	36	1	SAE 8	21,000	28
US300015000016	3	16	1.5	24	40	1	SAE 8	21,000	30
US300015000018	3	18	1.5	26	44	1	SAE 8	21,000	32
US300015000020	3	20	1.5	28	48	1	SAE 8	21,000	35
US300015000022	3	22	1.5	30	52	1	SAE 8	20,500	37
US300015000024	3	24	1.5	32	56	1	SAE 8	18,000	40
US300015000026	3	26	1.5	34	60	1	SAE 8	16,000	42
US300015000028	3	28	1.5	36	64	1	SAE 8	14,400	44
US300015000030	3	30	1.5	38	68	1	SAE 8	12,200	46
US300015000032	3	32	1.5	40	72	1	SAE 8	10,900	48
US300015000036	3	36	1.5	44	80	1	SAE 8	8,800	52
US300015000040	3	40	1.5	48	88	1	SAE 8	8,400	57
US300015000042	3	42	1.5	50	92	1	SAE 8	8,400	59
US300015000048	3	48	1.5	56	104	1	SAE 8	6,200	64

3.5" BORE		CROSS TUBE WELDED - DOUBLE ACTING / 3500 PSI							
SKU	BORE (INCH)	STROKE (INCH)	ROD Ø (INCH)	RETRACTED (INCH)	EXTENDED (INCH)	PIN Ø (INCH)	PORT SIZE	COLUMN LOAD	WEIGHT LBS
US350017500004	3.5	4	1.75	14	18	1.25	SAE 8	28,800	26
US350017500006	3.5	6	1.75	16	22	1.25	SAE 8	28,800	28
US350017500008	3.5	8	1.75	18	26	1.25	SAE 8	28,800	31
US350017500010	3.5	10	1.75	20	30	1.25	SAE 8	28,800	34
US350017500012	3.5	12	1.75	22	34	1.25	SAE 8	28,800	36
US350017500014	3.5	14	1.75	24	38	1.25	SAE 8	28,800	38
US350017500016	3.5	16	1.75	26	42	1.25	SAE 8	28,800	41
US350017500018	3.5	18	1.75	28	46	1.25	SAE 8	28,800	44
US350017500020	3.5	20	1.75	30	50	1.25	SAE 8	28,800	46
US350017500024	3.5	24	1.75	34	58	1.25	SAE 8	28,800	50
US350017500028	3.5	28	1.75	38	66	1.25	SAE 8	23,000	55
US350017500030	3.5	30	1.75	40	70	1.25	SAE 8	21,000	60
US350017500032	3.5	32	1.75	42	74	1.25	SAE 8	19,000	63
US350017500036	3.5	36	1.75	46	82	1.25	SAE 8	15,300	68

4" BORE		CROSS TUBE WELDED - DOUBLE ACTING / 3500 PSI							
SKU	BORE (INCH)	STROKE (INCH)	ROD Ø (INCH)	RETRACTED (INCH)	EXTENDED (INCH)	PIN Ø (INCH)	PORT SIZE	COLUMN LOAD	WEIGHT LBS
US400020000004	4	4	2	14	18	1.5	SAE 8	37,700	35
US400020000006	4	6	2	16	22	1.5	SAE 8	37,700	39
US400020000008	4	8	2	18	26	1.5	SAE 8	37,700	43
US400020000010	4	10	2	20	30	1.5	SAE 8	37,700	47
US400020000012	4	12	2	22	34	1.5	SAE 8	37,700	50
US400020000014	4	14	2	24	38	1.5	SAE 8	37,700	54
US400020000016	4	16	2	26	42	1.5	SAE 8	37,700	58
US400020000018	4	18	2	28	46	1.5	SAE 8	37,700	61
US400020000020	4	20	2	30	50	1.5	SAE 8	37,700	65
US400020000024	4	24	2	34	58	1.5	SAE 8	37,700	73
US400020000028	4	28	2	38	66	1.5	SAE 8	36,700	82
US400020000030	4	30	2	40	70	1.5	SAE 8	35,700	86
US400020000032	4	32	2	42	74	1.5	SAE 8	32,000	90
US400020000036	4	36	2	46	82	1.5	SAE 8	26,000	97
US400020000040	4	40	2	50	90	1.5	SAE 8	21,000	103
US400020000042	4	42	2	52	94	1.5	SAE 8	20,500	108
US400020000048	4	48	2	58	106	1.5	SAE 8	18,000	120

5" BORE		CROSS TUBE WELDED - DOUBLE ACTING / 3500 PSI							
SKU	BORE (INCH)	STROKE (INCH)	ROD Ø (INCH)	RETRACTED (INCH)	EXTENDED (INCH)	PIN Ø (INCH)	PORT SIZE	COLUMN LOAD	WEIGHT LBS
US500025000012	5	12	2.5	23	35	1.5	SAE 12	58,900	88
US500025000016	5	16	2.5	27	43	1.5	SAE 12	58,900	95
US500025000020	5	20	2.5	31	51	1.5	SAE 12	58,900	103
US500025000024	5	24	2.5	35	59	1.5	SAE 12	58,900	113
US500025000030	5	30	2.5	41	71	1.5	SAE 12	58,900	128
US500025000036	5	36	2.5	47	83	1.5	SAE 12	58,900	145
US500025000048	5	48	2.5	59	107	1.5	SAE 12	37,700	179

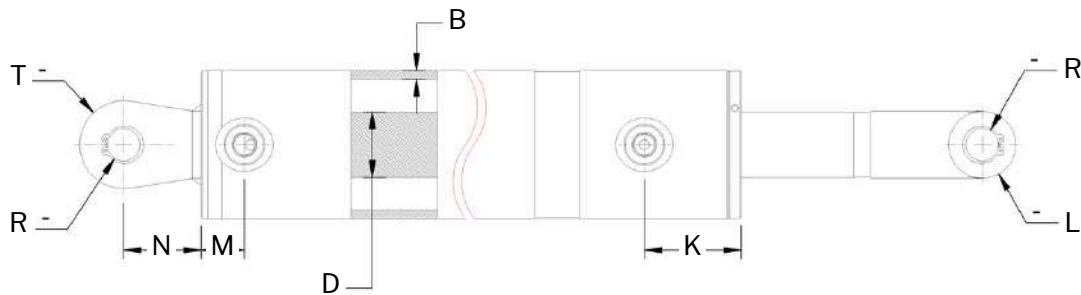
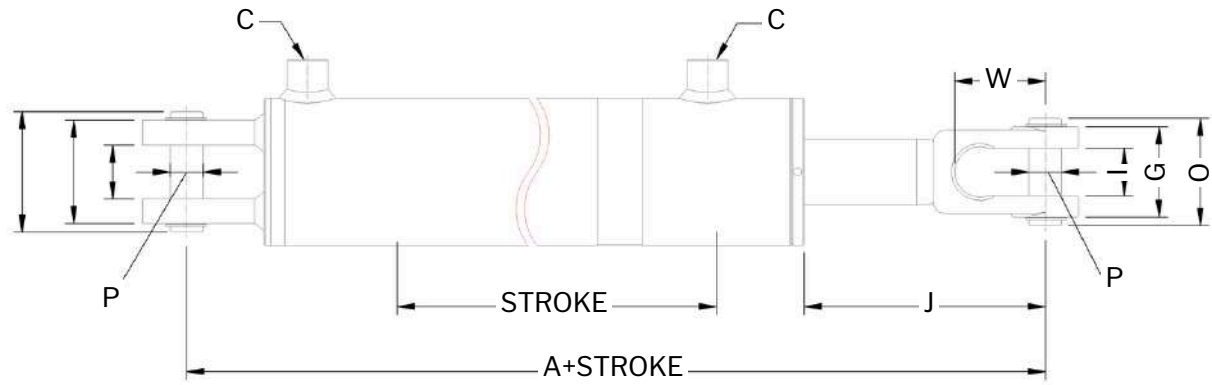
6" BORE		CROSS TUBE WELDED - DOUBLE ACTING / 3500 PSI							
SKU	BORE (INCH)	STROKE (INCH)	ROD Ø (INCH)	RETRACTED (INCH)	EXTENDED (INCH)	PIN Ø (INCH)	PORT SIZE	COLUMN LOAD	WEIGHT LBS
US600030000024	6	24	3	35	59	1.5	SAE 12	83,100	186
US600030000028	6	28	3	39	67	1.5	SAE 12	83,100	231
US600030000030	6	30	3	41	71	1.5	SAE 12	83,100	251
US600030000036	6	36	3	47	83	1.5	SAE 12	83,100	321

AG CLEVIS

WELDED CYLINDER 2500 PSI

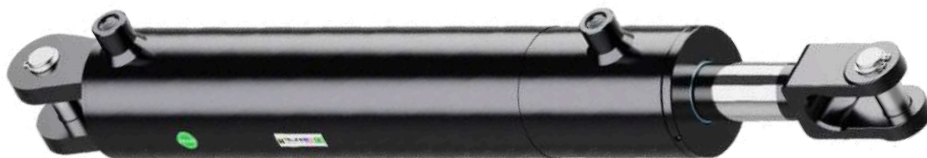
SPECIFICATIONS	
Type:	Welded hydraulic cylinder
Action:	Double acting
Rod End:	Welded steel clevis item
Base end:	Steel clevis end mount
Bore:	2" - 4"
Stroke:	8" - 24"
Rod:	Standard chrome plated rod steel 1045
Pressure:	2500 PSI
Color:	Black





AG CLEVIS END WELDED - DOUBLE ACTING / 2500 PSI

BORE	A	B	C	D	E	G	H	I	J	K	L	M	N	O	P	R	T	W
2"	10.25"	.19"	SAE 8	1.125"	2.08"	2.07"	1.134"	1.12"	3.74"	1.97"	.89"	.9"	2.24"	3.0"	1.0"	1.02"	.98"	2.125"
2.5"	10.25"	.19"	SAE 8	1.125"	2.08"	2.07"	1.134"	1.12"	3.68"	2.05"	.89"	.9"	2.24"	3.0"	1.0"	1.02"	.98"	2.125"
3"	10.25"	.19"	SAE 8	1.25"	2.7"	2.64"	1.134"	1.125"	3.78"	2.0"	1.0"	.9"	2.07"	4.0"	1.0"	1.02"	1.0"	2.24"
3.5"	10.25"	.19"	SAE 8	1.25"	2.7"	2.64"	1.134"	1.125"	3.78"	2.0"	1.0"	.9"	2.07"	4.0"	1.0"	1.02"	1.0"	2.24"
4"	10.25"	.19"	SAE 8	1.5"	2.7"	2.64"	1.134"	1.125"	3.58"	2.05"	1.0"	.9"	2.0"	4.0"	1.0"	1.02"	1.18"	2.24"



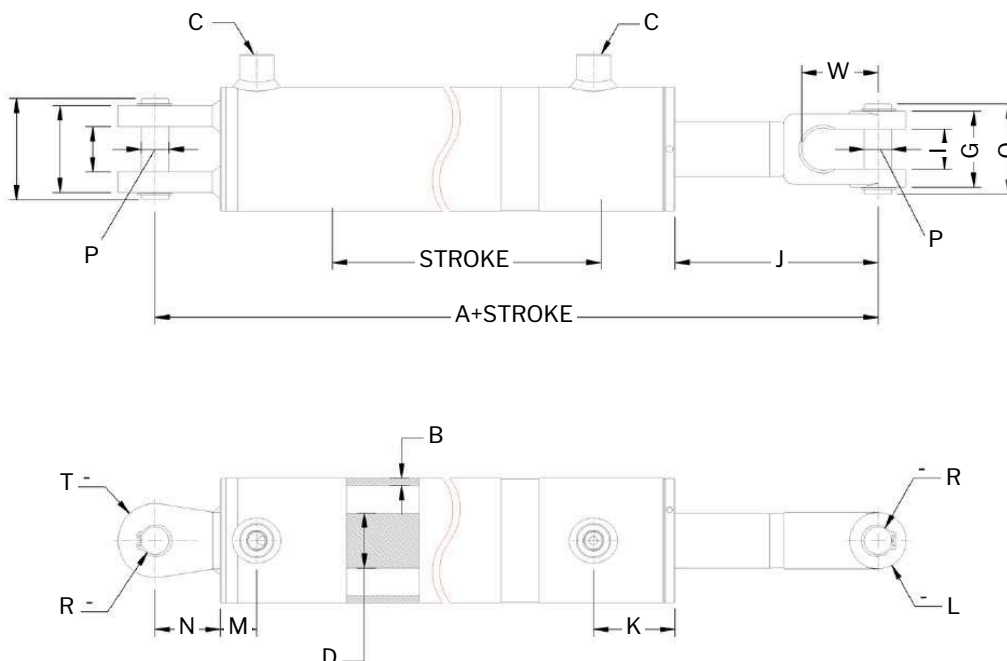
2" BORE		AG CLEVIS END WELDED - DOUBLE ACTING / 2500 PSI							
SKU	BORE (INCH)	STROKE (INCH)	ROD Ø (INCH)	RETRACTED (INCH)	EXTENDED (INCH)	PIN Ø (INCH)	PORT SIZE	COLUMN LOAD	WEIGHT LBS
US200011250008	2	8	1.125	18.25	26.25	1	SAE 8	7,850	15
US200011250008A	2	8	1.125	20.25	28.25	1	SAE 8	7,850	15
US200011250010	2	10	1.125	20.25	30.25	1	SAE 8	7,850	16
US200011250012	2	12	1.125	22.25	34.25	1	SAE 8	7,850	17
US200011250014	2	14	1.125	24.25	38.25	1	SAE 8	7,850	19
US200011250016	2	16	1.125	26.25	42.25	1	SAE 8	7,850	20
US200011250018	2	18	1.125	28.25	46.25	1	SAE 8	7,850	21
US200011250020	2	20	1.125	30.25	50.25	1	SAE 8	7,850	23
US200011250024	2	24	1.125	34.25	58.25	1	SAE 8	6,950	25

2.5" BORE		AG CLEVIS END WELDED - DOUBLE ACTING / 2500 PSI							
SKU	BORE (INCH)	STROKE (INCH)	ROD Ø (INCH)	RETRACTED (INCH)	EXTENDED (INCH)	PIN Ø (INCH)	PORT SIZE	COLUMN LOAD	WEIGHT LBS
US250011250008	2.5	8	1.125	18.25	26.25	1	SAE 8	12,270	18
US250011250008A	2.5	8	1.125	20.25	28.25	1	SAE 8	12,270	18
US250011250010	2.5	10	1.125	20.25	30.25	1	SAE 8	12,270	19
US250011250012	2.5	12	1.125	22.25	34.25	1	SAE 8	12,270	21
US250011250014	2.5	14	1.125	24.25	38.25	1	SAE 8	12,270	22
US250011250016	2.5	16	1.125	26.25	42.25	1	SAE 8	10,000	24
US250011250018	2.5	18	1.125	28.25	46.25	1	SAE 8	8,370	25
US250011250020	2.5	20	1.125	30.25	50.25	1	SAE 8	7,100	27
US250011250024	2.5	24	1.125	34.25	58.25	1	SAE 8	5,500	29

3" BORE		AG CLEVIS END WELDED - DOUBLE ACTING / 2500 PSI							
SKU	BORE (INCH)	STROKE (INCH)	ROD Ø (INCH)	RETRACTED (INCH)	EXTENDED (INCH)	PIN Ø (INCH)	PORT SIZE	COLUMN LOAD	WEIGHT LBS
US300012500008	3	8	1.25	18.25	26.25	1	SAE 8	17,670	24
US300012500008A	3	8	1.25	20.25	28.25	1	SAE 8	17,670	25
US300012500010	3	10	1.25	20.25	30.25	1	SAE 8	17,670	26
US300012500012	3	12	1.25	22.25	34.25	1	SAE 8	17,670	28
US300012500014	3	14	1.25	24.25	38.25	1	SAE 8	17,670	29
US300012500016	3	16	1.25	26.25	42.25	1	SAE 8	17,670	31
US300012500018	3	18	1.25	28.25	46.25	1	SAE 8	12,690	33
US300012500020	3	20	1.25	30.25	50.25	1	SAE 8	10,780	35
US300012500024	3	24	1.25	34.25	58.25	1	SAE 8	8,050	37

3.5" Bore		AG CLEVIS END WELDED - DOUBLE ACTING / 2500 PSI							
SKU	BORE (INCH)	STROKE (INCH)	ROD Ø (INCH)	RETRACTED (INCH)	EXTENDED (INCH)	PIN Ø (INCH)	PORT SIZE	COLUMN LOAD	WEIGHT LBS
US350012500008	3.5	8	1.25	18.25	26.25	1	SAE 8	24,000	27
US350012500008A	3.5	8	1.25	20.25	28.25	1	SAE 8	24,000	28
US3500125000010	3.5	10	1.25	20.25	30.25	1	SAE 8	24,000	29
US3500125000012	3.5	12	1.25	22.25	34.25	1	SAE 8	24,000	31
US3500125000014	3.5	14	1.25	24.25	38.25	1	SAE 8	18,700	33
US3500125000016	3.5	16	1.25	26.25	42.25	1	SAE 8	15,300	35
US3500125000018	3.5	18	1.25	28.25	46.25	1	SAE 8	12,800	37
US3500125000020	3.5	20	1.25	30.25	50.25	1	SAE 8	10,900	39
US3500125000024	3.5	24	1.25	34.25	58.25	1	SAE 8	16,600	46

4" BORE		AG CLEVIS END WELDED - DOUBLE ACTING / 2500 PSI							
SKU	BORE (INCH)	STROKE (INCH)	ROD Ø (INCH)	RETRACTED (INCH)	EXTENDED (INCH)	PIN Ø (INCH)	PORT SIZE	COLUMN LOAD	WEIGHT LBS
US400015000008	4	8	1.5	18.25	26.25	1	SAE 8	31,400	37
US400015000008A	4	8	1.5	20.25	28.25	1	SAE 8	31,400	38
US4000150000010	4	10	1.5	20.25	30.25	1	SAE 8	31,400	39
US4000150000012	4	12	1.5	22.25	34.25	1	SAE 8	31,400	42
US4000150000014	4	14	1.5	24.25	38.25	1	SAE 8	31,400	45
US4000150000016	4	16	1.5	26.25	42.25	1	SAE 8	28,200	48
US4000150000018	4	18	1.5	28.25	46.25	1	SAE 8	25,300	50
US4000150000020	4	20	1.5	30.25	50.25	1	SAE 8	22,600	52
US4000150000024	4	24	1.5	34.25	58.25	1	SAE 8	16,800	59

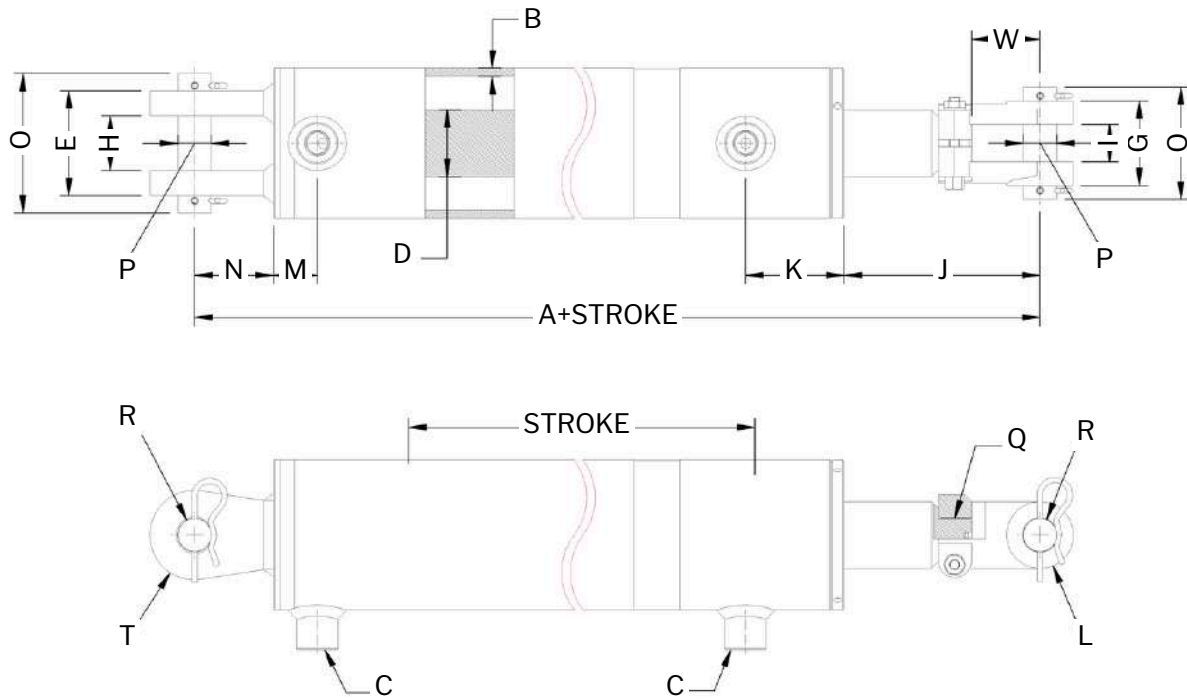


CLEVIS END

WELDED CYLINDER 3500 PSI

SPECIFICATIONS	
Type:	Welded hydraulic cylinder
Action:	Double acting
Rod End:	Screw-on ductile iron clevis item
Base end:	Welded steel clevis item
Bore:	2" - 4"
Stroke:	4" - 36"
Rod:	Standard chrome plated rod steel 1045
Pressure:	3500 PSI
Color:	Black





CLEVIS END WELDED - DOUBLE ACTING / 3500 PSI

BORE	A	B	C	D	E	G	H	I	J	K	L	M	N	T	O	P	R	Q	W
2"	10.25"	.19"	SAE 8	1.25"	2.4"	2.54"	1.125"	1.13"	3.48"	2.05"	1.0"	.83"	2.24"	1.0"	4.0"	1.0"	1.015"	1.1/8-12 UNF	2.125"
2.5"	10.25"	.19"	SAE 8	1.25"	2.4"	2.54"	1.125"	1.13"	3.48"	2.05"	1.0"	.83"	2.24"	1.0"	4.0"	1.0"	1.015"	1.1/8-12 UNF	2.125"
3"	10.25"	.19"	SAE 8	1.5"	2.7"	2.64"	1.13"	1.13"	3.46"	2.13"	1.13"	.85"	2.07"	1.02"	4.0"	1.0"	1.015"	1.1/8-12 UNF	2.125"
3.5"	10.25"	.19"	SAE 8	1.75"	2.7"	2.64"	1.13"	1.13"	3.46"	2.13"	1.13"	.85"	2.07"	1.02"	4.0"	1.0"	1.015"	1.1/8-12 UNF	2.125"
4"	10.25"	.25"	SAE 8	2.0"	2.7"	2.64"	1.13"	1.13"	3.52"	2.13"	1.13"	.85"	2.0"	1.18"	4.0"	1.0"	1.015"	1.1/8-12 UNF	2.125"



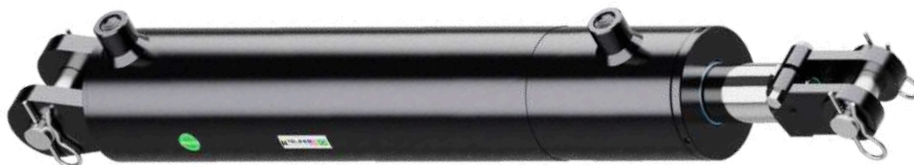
2" BORE		CLEVIS END WELDED - DOUBLE ACTING / 3500 PSI							
SKU	BORE (INCH)	STROKE (INCH)	ROD Ø (INCH)	RETRACTED (INCH)	EXTENDED (INCH)	PIN Ø (INCH)	PORT SIZE	COLUMN LOAD	WEIGHT LBS
US200012500004	2	4	1.25	14.25	18.25	1	SAE 8	9,400	16
US200012500006	2	6	1.25	16.25	22.25	1	SAE 8	9,400	17
US200012500008	2	8	1.25	18.25	26.25	1	SAE 8	9,400	19
US200012500008A	2	8	1.25	20.25	28.25	1	SAE 8	9,400	19
US200012500010	2	10	1.25	20.25	30.25	1	SAE 8	9,400	19
US200012500012	2	12	1.25	22.25	34.25	1	SAE 8	9,400	21
US200012500014	2	14	1.25	24.25	38.25	1	SAE 8	9,400	23
US200012500016	2	16	1.25	26.25	42.25	1	SAE 8	9,400	25
US200012500018	2	18	1.25	28.25	46.25	1	SAE 8	9,400	25
US200012500020	2	20	1.25	30.25	50.25	1	SAE 8	9,400	26
US200012500024	2	24	1.25	34.25	58.25	1	SAE 8	7,700	30
US200012500030	2	30	1.25	40.25	70.25	1	SAE 8	5,300	34
US200012500036	2	36	1.25	46.25	82.25	1	SAE 8	3,900	39

2.5" BORE		CLEVIS END WELDED - DOUBLE ACTING / 3500 PSI							
SKU	BORE (INCH)	STROKE (INCH)	ROD Ø (INCH)	RETRACTED (INCH)	EXTENDED (INCH)	PIN Ø (INCH)	PORT SIZE	COLUMN LOAD	WEIGHT LBS
US250012500004	2.5	4	1.25	14.25	18.25	1	SAE 8	14,700	18
US250012500006	2.5	6	1.25	16.25	22.25	1	SAE 8	14,700	19
US250012500008	2.5	8	1.25	18.25	26.25	1	SAE 8	14,700	22
US250012500008A	2.5	8	1.25	20.25	28.25	1	SAE 8	14,700	22
US250012500010	2.5	10	1.25	20.25	30.25	1	SAE 8	14,700	23
US250012500012	2.5	12	1.25	22.25	34.25	1	SAE 8	14,700	24
US250012500014	2.5	14	1.25	24.25	38.25	1	SAE 8	14,700	25
US250012500016	2.5	16	1.25	26.25	42.25	1	SAE 8	14,700	27
US250012500018	2.5	18	1.25	28.25	46.25	1	SAE 8	14,700	30
US250012500020	2.5	20	1.25	30.25	50.25	1	SAE 8	10,600	31
US250012500024	2.5	24	1.25	34.25	58.25	1	SAE 8	7,900	33
US250012500030	2.5	30	1.25	40.25	70.25	1	SAE 8	5,400	38
US250012500036	2.5	36	1.25	46.25	82.25	1	SAE 8	4,000	44

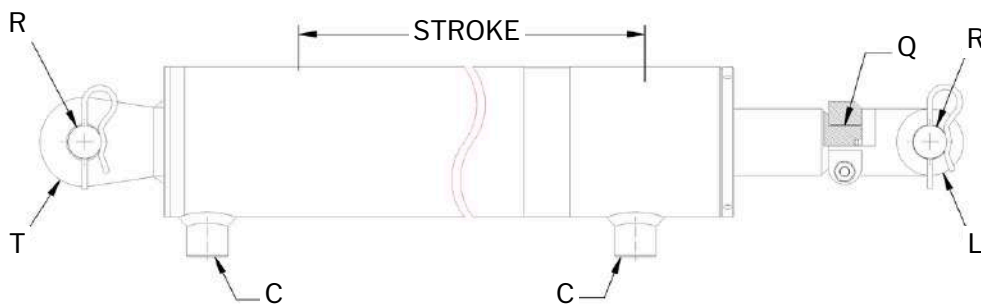
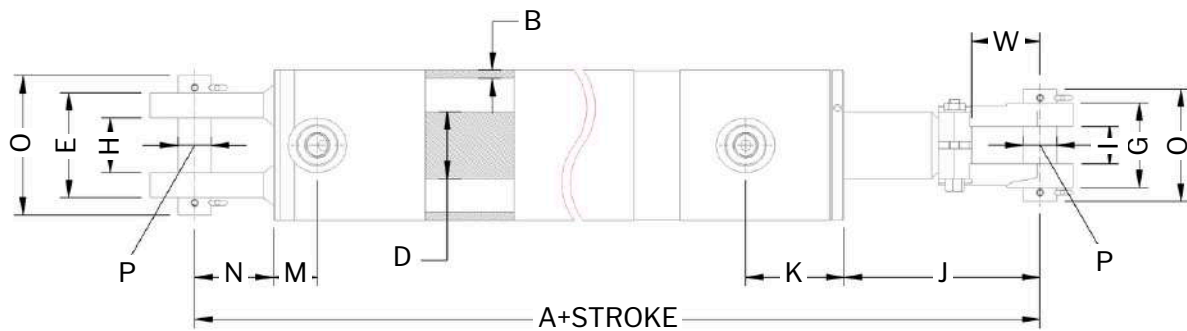


3" BORE		CLEVIS END WELDED - DOUBLE ACTING / 3500 PSI							
SKU	BORE (INCH)	STROKE (INCH)	ROD Ø (INCH)	RETRACTED (INCH)	EXTENDED (INCH)	PIN Ø (INCH)	PORT SIZE	COLUMN LOAD	WEIGHT LBS
US300015000004	3	4	1.5	14.25	18.25	1	SAE 8	21,200	24
US300015000006	3	6	1.5	16.25	22.25	1	SAE 8	21,200	25
US300015000008	3	8	1.5	18.25	26.25	1	SAE 8	21,200	27
US300015000008A	3	8	1.5	20.25	28.25	1	SAE 8	21,200	29
US300015000010	3	10	1.5	20.25	30.25	1	SAE 8	21,200	30
US300015000012	3	12	1.5	22.25	34.25	1	SAE 8	21,200	32
US300015000014	3	14	1.5	24.25	38.25	1	SAE 8	21,200	34
US300015000016	3	16	1.5	26.25	42.25	1	SAE 8	21,200	35
US300015000018	3	18	1.5	28.25	46.25	1	SAE 8	21,200	37
US300015000020	3	20	1.5	30.25	50.25	1	SAE 8	21,200	40
US300015000024	3	24	1.5	34.25	58.25	1	SAE 8	16,400	43
US300015000030	3	30	1.5	40.25	70.25	1	SAE 8	11,300	50
US300015000036	3	36	1.5	46.25	82.25	1	SAE 8	8,200	55

3.5" BORE		CLEVIS END WELDED - DOUBLE ACTING / 3500 PSI							
SKU	BORE (INCH)	STROKE (INCH)	ROD Ø (INCH)	RETRACTED (INCH)	EXTENDED (INCH)	PIN Ø (INCH)	PORT SIZE	COLUMN LOAD	WEIGHT LBS
US350017500004	3.5	4	1.75	14.25	18.25	1	SAE 8	28,800	29
US350017500006	3.5	6	1.75	16.25	22.25	1	SAE 8	28,800	31
US350017500008	3.5	8	1.75	18.25	26.25	1	SAE 8	28,800	33
US350017500008A	3.5	8	1.75	20.25	28.25	1	SAE 8	28,800	34
US350017500010	3.5	10	1.75	20.25	30.25	1	SAE 8	28,800	36
US350017500012	3.5	12	1.75	22.25	34.25	1	SAE 8	28,800	39
US350017500014	3.5	14	1.75	24.25	38.25	1	SAE 8	28,800	41
US350017500016	3.5	16	1.75	26.25	42.25	1	SAE 8	28,800	44
US350017500018	3.5	18	1.75	28.25	46.25	1	SAE 8	28,800	47
US350017500020	3.5	20	1.75	30.25	50.25	1	SAE 8	28,800	50
US350017500024	3.5	24	1.75	34.25	58.25	1	SAE 8	26,000	53
US350017500030	3.5	30	1.75	40.25	70.25	1	SAE 8	20,000	61
US350017500036	3.5	36	1.75	46.25	82.25	1	SAE 8	15,000	70



4" BORE		CLEVIS END WELDED - DOUBLE ACTING / 3500 PSI							
SKU	BORE (INCH)	STROKE (INCH)	ROD Ø (INCH)	RETRACTED (INCH)	EXTENDED (INCH)	PIN Ø (INCH)	PORT SIZE	COLUMN LOAD	WEIGHT LBS
US400020000004	4	4	2	14.25	18.25	1	SAE 8	37,000	36
US400020000006	4	6	2	16.25	22.25	1	SAE 8	37,000	39
US400020000008	4	8	2	18.25	26.25	1	SAE 8	37,000	44
US400020000008A	4	8	2	20.25	28.25	1	SAE 8	37,000	45
US400020000010	4	10	2	20.25	30.25	1	SAE 8	37,000	47
US400020000012	4	12	2	22.25	34.25	1	SAE 8	37,000	50
US400020000014	4	14	2	24.25	38.25	1	SAE 8	37,000	54
US400020000016	4	16	2	26.25	42.25	1	SAE 8	37,000	57
US400020000018	4	18	2	28.25	46.25	1	SAE 8	37,000	61
US400020000020	4	20	2	30.25	50.25	1	SAE 8	37,000	65
US400020000024	4	24	2	34.25	58.25	1	SAE 8	36,000	73
US400020000030	4	30	2	40.25	70.25	1	SAE 8	33,000	83
US400020000032	4	32	2	42.25	74.25	1	SAE 8	31,000	87
US400020000036	4	36	2	46.25	82.25	1	SAE 8	26,000	95

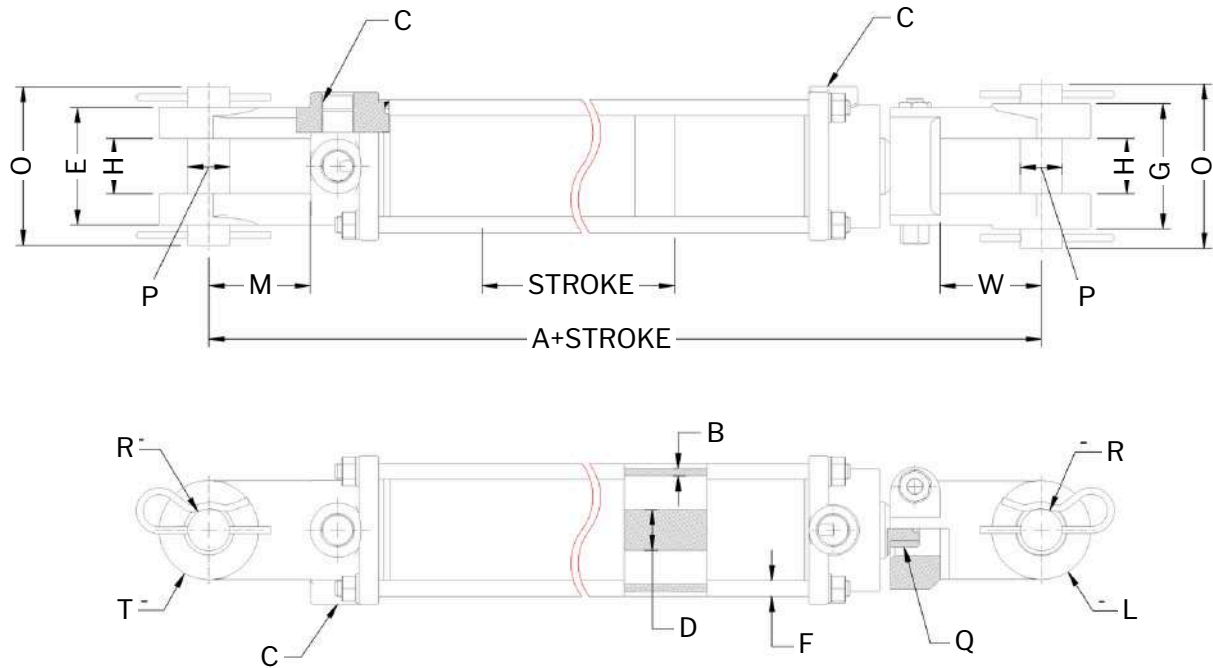


TIE-ROD

CLEVIS CYLINDER 2500 PSI

SPECIFICATIONS	
Type:	Tie-Rod hydraulic cylinder
Action:	Double acting
Rod End:	Screw-on ductile iron clevis item
Base end:	Ductile iron clevis end mount
Bore:	2" - 3"
Stroke:	4" - 24"
Rod:	Standard chrome plated rod steel 1045
Pressure:	2500 PSI
Color:	Black



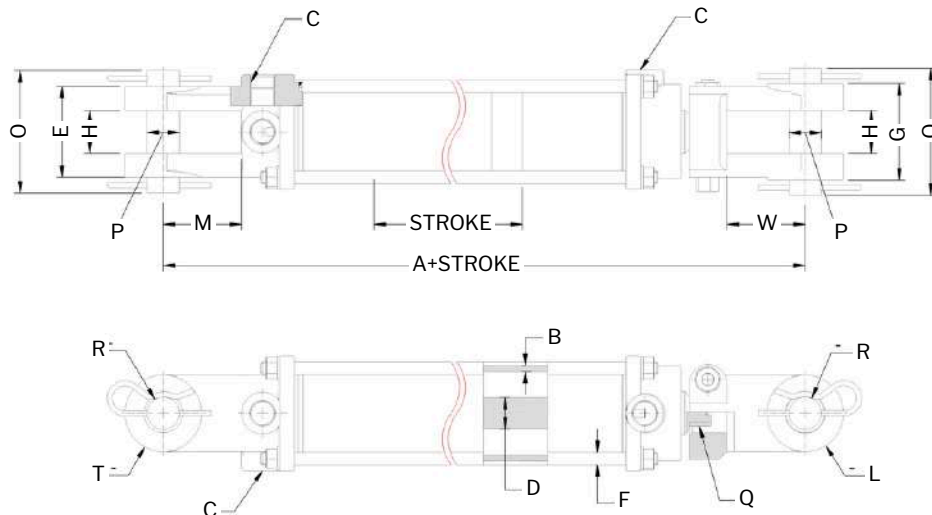


TIE-ROD - DOUBLE ACTING / 2500 PSI																
BORE	A	B	C	D	F	E	G	H	L	M	P	R	T	Q	O	W
2"	10.25"	1.88"	3/8" NPT	1.125"	.35"	2.38"	2.54"	1.125"	1.0"	2.05"	1.0"	1.015"	1.0"	1 1/8-12 UNF	4.0"	2.125"
2.5"	10.25"	1.88"	3/8" NPT	1.125"	.39"	2.56"	2.54"	1.125"	1.0"	2.05"	1.0"	1.015"	1.0"	1 1/8-12 UNF	4.0"	2.125"
3"	10.25"	1.88"	1/2" NPT	1.25"	.42"	2.6"	2.64"	1.13"	1.13"	2.05"	1.0"	1.015"	1.0"	1 1/8-12 UNF	4.0"	2.125"

2" BORE	TIE-ROD - DOUBLE ACTING / 2500 PSI									
SKU	BORE (INCH)	STROKE (INCH)	ROD Ø (INCH)	RETRACTED (INCH)	EXTENDED (INCH)	PIN Ø (INCH)	PORT SIZE	COLUMN LOAD	WEIGHT LBS	
US200011250004	2	4	1.125	14.25	18.25	1	3/8" NPT	7,850	15	
US200011250006	2	6	1.125	16.25	22.25	1	3/8" NPT	7,850	17	
US200011250008	2	8	1.125	18.25	26.25	1	3/8" NPT	7,850	18	
US200011250010	2	10	1.125	20.25	28.25	1	3/8" NPT	7,850	19	
US200011250012	2	12	1.125	20.25	30.25	1	3/8" NPT	7,850	20	
US200011250014	2	14	1.125	22.25	34.25	1	3/8" NPT	7,850	22	
US200011250016	2	16	1.125	24.25	38.25	1	3/8" NPT	7,850	23	
US200011250018	2	18	1.125	26.25	42.25	1	3/8" NPT	7,850	25	
US200011250020	2	20	1.125	28.25	46.25	1	3/8" NPT	7,850	27	
US200011250022	2	22	1.125	30.25	50.25	1	3/8" NPT	7,850	28	
US200011250024	2	24	1.125	34.25	58.25	1	3/8" NPT	6,950	31	

2.5" BORE		TIE-ROD - DOUBLE ACTING / 2500 PSI							
SKU	BORE (INCH)	STROKE (INCH)	ROD Ø (INCH)	RETRACTED (INCH)	EXTENDED (INCH)	PIN Ø (INCH)	PORT SIZE	COLUMN LOAD	WEIGHT LBS
US25001250004	2.5	4	1.125	14.25	18.25	1	3/8" NPT	12,270	18
US25001250006	2.5	6	1.125	16.25	22.25	1	3/8" NPT	12,270	19
US25001250008	2.5	8	1.125	18.25	26.25	1	3/8" NPT	12,270	21
US25001250010	2.5	10	1.125	20.25	28.25	1	3/8" NPT	12,270	22
US25001250012	2.5	12	1.125	20.25	30.25	1	3/8" NPT	12,270	23
US25001250014	2.5	14	1.125	22.25	34.25	1	3/8" NPT	12,270	25
US25001250016	2.5	16	1.125	24.25	38.25	1	3/8" NPT	12,270	26
US25001250018	2.5	18	1.125	26.25	42.25	1	3/8" NPT	10,000	28
US25001250020	2.5	20	1.125	28.25	46.25	1	3/8" NPT	8,370	30
US25001250022	2.5	22	1.125	30.25	50.25	1	3/8" NPT	7,100	32
US25001250024	2.5	24	1.125	34.25	58.25	1	3/8" NPT	5,500	35

3" BORE		TIE-ROD - DOUBLE ACTING / 2500 PSI							
SKU	BORE (INCH)	STROKE (INCH)	ROD Ø (INCH)	RETRACTED (INCH)	EXTENDED (INCH)	PIN Ø (INCH)	PORT SIZE	COLUMN LOAD	WEIGHT LBS
US300012500004	3	4	1.25	14.25	18.25	1	1/2" NPT	17,670	24
US300012500006	3	6	1.25	16.25	22.25	1	1/2" NPT	17,670	26
US300012500008	3	8	1.25	18.25	26.25	1	1/2" NPT	17,670	29
US300012500010	3	10	1.25	20.25	28.25	1	1/2" NPT	17,670	29
US300012500012	3	12	1.25	20.25	30.25	1	1/2" NPT	17,670	30
US300012500014	3	14	1.25	22.25	34.25	1	1/2" NPT	17,670	33
US300012500016	3	16	1.25	24.25	38.25	1	1/2" NPT	17,670	35
US300012500018	3	18	1.25	26.25	42.25	1	1/2" NPT	17,670	37
US300012500020	3	20	1.25	28.25	46.25	1	1/2" NPT	12,690	39
US300012500022	3	22	1.25	30.25	50.25	1	1/2" NPT	10,780	42
US300012500024	3	24	1.25	34.25	58.25	1	1/2" NPT	8,050	45

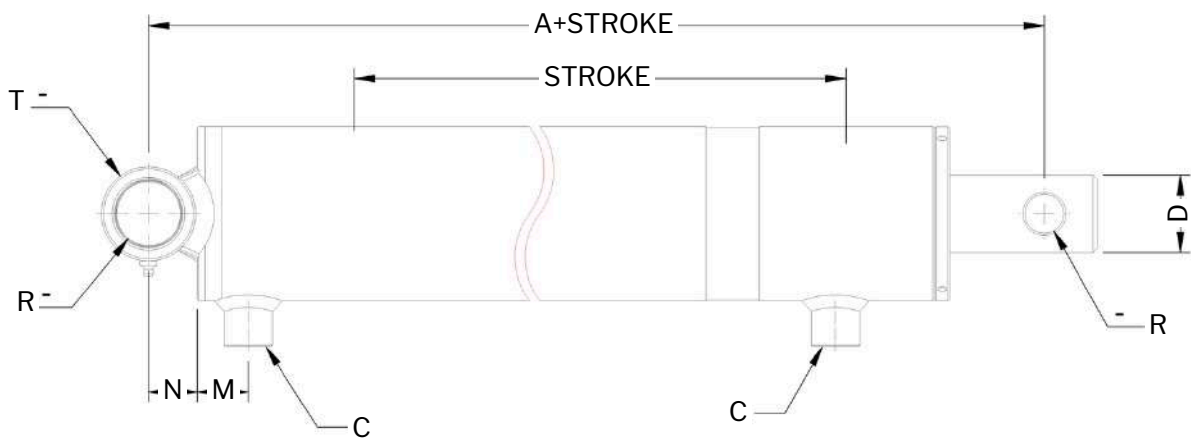
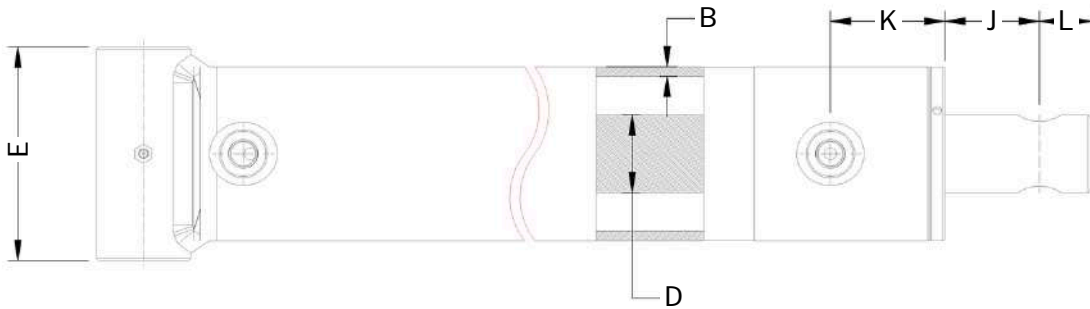


PIN EYE

WELDED CYLINDER 3500 PSI

SPECIFICATIONS	
Type:	Welded hydraulic cylinder
Action:	Double acting
Rod End:	Through-hole for pin attachment
Base end:	High tensile steel tube
Bore:	2" - 4"
Stroke:	8" - 36"
Rod:	Standard chrome plated rod steel 1045
Pressure:	3500 PSI
Color:	Black





PIN EYE WELDED - DOUBLE ACTING / 3500 PSI													
BORE	A	B	C	D	E	J		K	L	M	N	R	T
						STROKE 4...20	STROKE 22...36						
2"	8.0"	.19"	SAE 8	1.25"	2.5"	2.84"	2.05"	2.05"	.75"	.83"	.63"	.76"	1.25"
2.5"	8.0"	.19"	SAE 8	1.5"	3.0"	2.84"	2.05"	2.05"	.75"	.83"	.63"	.76"	1.25"
3"	8.0"	.19"	SAE 8	1.5"	3.5"	2.52"	1.73"	2.13"	1.0"	.85"	.75"	1.015"	1.5"
3.5"	8.0"	.19"	SAE 8	1.75"	4.0"	2.52"	1.54"	2.13"	.98"	.85"	.75"	1.015"	1.5"
4"	9.0"	.25"	SAE 8	2.0"	4.63"	2.86"	1.87"	2.48"	1.26"	.85"	1.02"	1.26"	2.05"



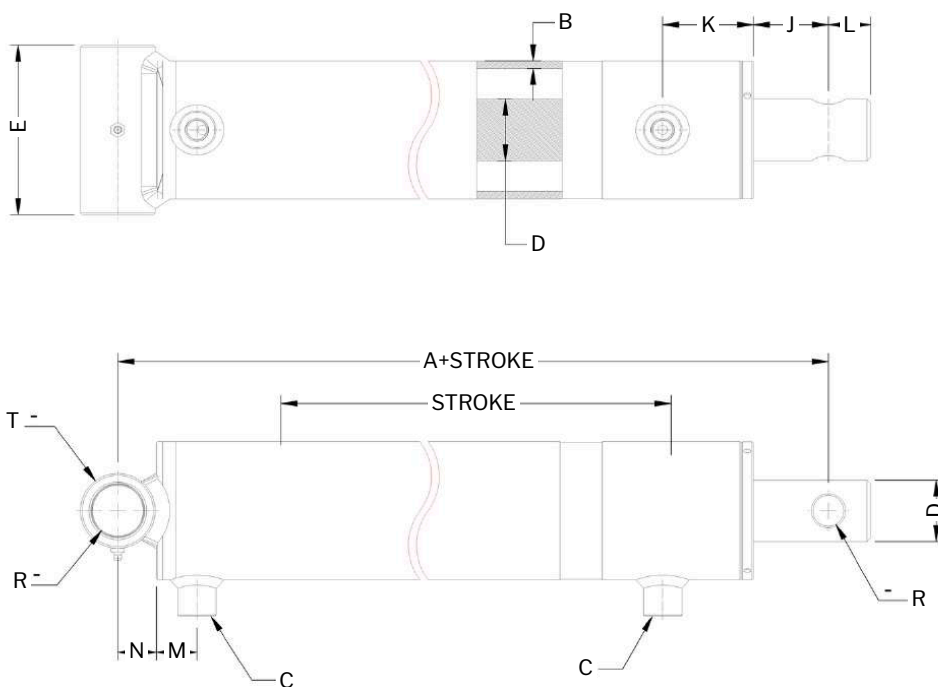
2" BORE		PIN EYE WELDED - DOUBLE ACTING / 3500 PSI							
SKU	BORE (INCH)	STROKE (INCH)	ROD Ø (INCH)	RETRACTED (INCH)	EXTENDED (INCH)	PIN Ø (INCH)	PORT SIZE	COLUMN LOAD	WEIGHT LBS
US200012500008	2	8	1.25	16	24	0.75	SAE 8	9,400	13
US200012500010	2	10	1.25	18	28	0.75	SAE 8	9,400	15
US200012500012	2	12	1.25	20	32	0.75	SAE 8	9,400	16
US200012500016	2	16	1.25	24	40	0.75	SAE 8	9,400	19
US200012500020	2	20	1.25	28	48	0.75	SAE 8	9,400	22
US200012500024	2	24	1.25	32	56	0.75	SAE 8	8,100	25
US200012500030	2	30	1.25	38	68	0.75	SAE 8	5,600	30
US200012500036	2	36	1.25	44	80	0.75	SAE 8	4,100	34

2.5" BORE		PIN EYE WELDED - DOUBLE ACTING / 3500 PSI							
SKU	BORE (INCH)	STROKE (INCH)	ROD Ø (INCH)	RETRACTED (INCH)	EXTENDED (INCH)	PIN Ø (INCH)	PORT SIZE	COLUMN LOAD	WEIGHT LBS
US250015000008	2.5	8	1.5	16	24	0.75	SAE 8	14,700	18
US250015000010	2.5	10	1.5	18	28	0.75	SAE 8	14,700	20
US250015000012	2.5	12	1.5	20	32	0.75	SAE 8	14,700	22
US250015000016	2.5	16	1.5	24	40	0.75	SAE 8	14,700	25
US250015000020	2.5	20	1.5	28	48	0.75	SAE 8	14,700	30
US250015000024	2.5	24	1.5	32	56	0.75	SAE 8	14,700	34
US250015000030	2.5	30	1.5	38	68	0.75	SAE 8	8,400	40
US250015000036	2.5	36	1.5	44	80	0.75	SAE 8	6,100	46

3" BORE		PIN EYE WELDED - DOUBLE ACTING / 3500 PSI							
SKU	BORE (INCH)	STROKE (INCH)	ROD Ø (INCH)	RETRACTED (INCH)	EXTENDED (INCH)	PIN Ø (INCH)	PORT SIZE	COLUMN LOAD	WEIGHT LBS
US300015000008	3	8	1.5	16	24	1	SAE 8	21,200	22
US300015000010	3	10	1.5	18	28	1	SAE 8	21,200	24
US300015000012	3	12	1.5	20	32	1	SAE 8	21,200	26
US300015000016	3	16	1.5	24	40	1	SAE 8	21,200	30
US300015000020	3	20	1.5	28	48	1	SAE 8	21,200	35
US300015000024	3	24	1.5	32	56	1	SAE 8	17,800	40
US300015000030	3	30	1.5	38	68	1	SAE 8	12,100	45
US300015000036	3	36	1.5	44	80	1	SAE 8	8,800	50

3.5" BORE		PIN EYE WELDED - DOUBLE ACTING / 3500 PSI							
SKU	BORE (INCH)	STROKE (INCH)	ROD Ø (INCH)	RETRACTED (INCH)	EXTENDED (INCH)	PIN Ø (INCH)	PORT SIZE	COLUMN LOAD	WEIGHT LBS
US350017500008	3.5	8	1.75	16	24	1	SAE 8	28,800	28
US350017500010	3.5	10	1.75	18	28	1	SAE 8	28,800	30
US350017500012	3.5	12	1.75	20	32	1	SAE 8	28,800	33
US350017500016	3.5	16	1.75	24	40	1	SAE 8	28,800	38
US350017500020	3.5	20	1.75	28	48	1	SAE 8	28,800	43
US350017500024	3.5	24	1.75	32	56	1	SAE 8	28,800	49
US350017500030	3.5	30	1.75	38	68	1	SAE 8	22,300	59
US350017500036	3.5	36	1.75	44	80	1	SAE 8	16,100	66

4" BORE		PIN EYE WELDED - DOUBLE ACTING / 3500 PSI							
SKU	BORE (INCH)	STROKE (INCH)	ROD Ø (INCH)	RETRACTED (INCH)	EXTENDED (INCH)	PIN Ø (INCH)	PORT SIZE	COLUMN LOAD	WEIGHT LBS
US400020000008	4	8	2	17	25	1	SAE 8	37,700	41
US400020000010	4	10	2	19	29	1	SAE 8	37,700	45
US400020000012	4	12	2	21	33	1	SAE 8	37,700	49
US400020000016	4	16	2	25	41	1	SAE 8	37,700	56
US400020000020	4	20	2	29	49	1	SAE 8	37,700	64
US400020000024	4	24	2	33	57	1	SAE 8	37,700	73
US400020000030	4	30	2	39	69	1	SAE 8	32,000	85
US400020000036	4	36	2	45	81	1	SAE 8	27,400	93

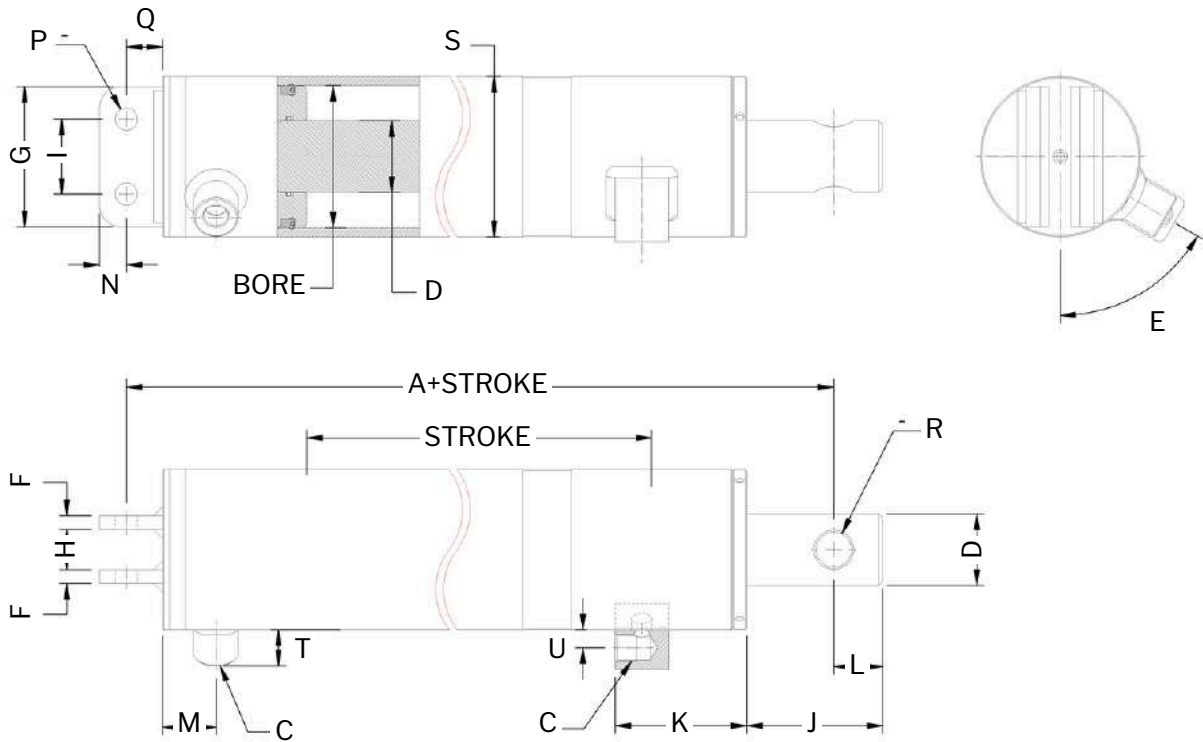


TRAILER HOIST

WELDED CYLINDER 3500 PSI

SPECIFICATIONS	
Type:	Welded hydraulic cylinder
Action:	Double acting
Rod End:	A heavy-duty rod with a through-hole for pin attachment
Base end:	The mounting flange is a one solid machined piece
Bore:	5"
Stroke:	15.75", 20", 21.5"
Rod:	Standard chrome plated rod steel 1045
Pressure:	3500 PSI
Color:	Black





TRAILER HOIST WELDED - DOUBLE ACTING / 3500 PSI

BORE	STROKE	A	B	C	D	E	F	G	H	I	J	K	L	M	N	O	P	Q	R	S	T	U
5"	15.75	7.75	0.25	SAE 6	2	60°	0.39	5	1.125	2.5	3.5	2.56	1.25	0.95	0.7	SAE 6	0.63	1.02	0.63	5.5	0.71	0.67
5"	20	7.5	0.25	SAE 6	2	60°	0.39	5	1.125	2.5	3.2	2.56	1.25	0.95	0.7	SAE 6	0.63	1.02	0.63	5.5	0.71	0.67
5"	21.5	7.87	0.25	SAE 6	2	60°	0.39	5	1.125	2.5	3.57	2.56	1.25	0.95	0.7	SAE 6	0.63	1.02	0.63	5.5	0.71	0.67

5" BORE TRAILER HOIST WELDED - DOUBLE ACTING / 3500 PSI

SKU	BORE Ø D (INCH)	STROKE S (INCH)	ROD Ø D (INCH)	RETRACTED L (INCH)	EXTENDED (INCH)	A (INCH)	PIN Ø (BASE)	PIN Ø (ROD)	PORT SIZE	COLUMN LOAD	WEIGHT LBS
US500020001575	5	15.75	2	23.5	39.25	3.5	0.63	0.63	SAE 6	57,724	63.3
US500020000020	5	20	2	27.5	47.5	3.2	0.63	0.63	SAE 6	57,724	74
US500020000215	5	21.5	2	29.37	50.87	3.57	0.63	0.63	SAE 6	57,724	77.2

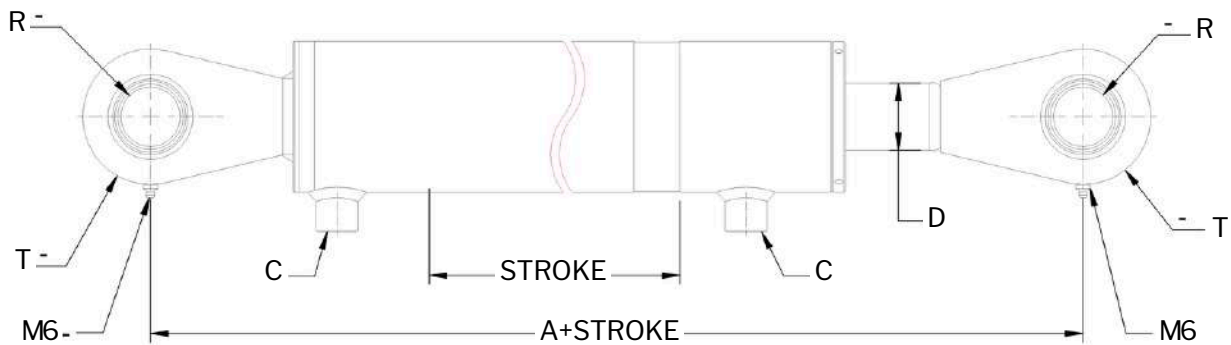
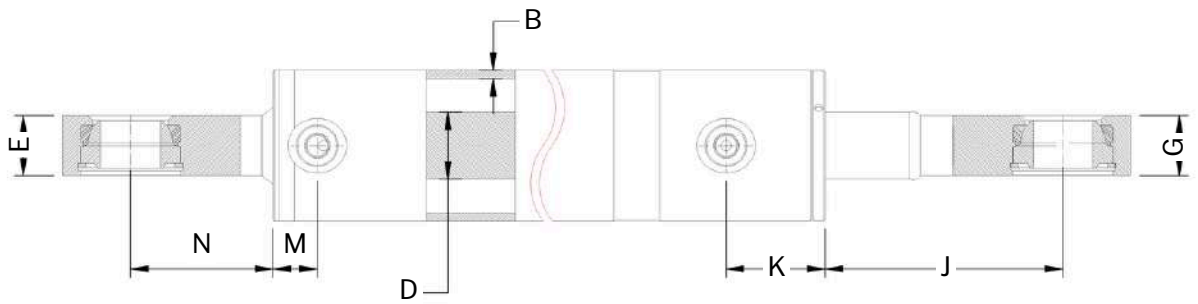


SWIVEL EYE

WELDED CYLINDER 3500 PSI

SPECIFICATIONS	
Type:	Welded hydraulic cylinder
Action:	Double acting
Rod End:	Spherical bearings, steel welded ends
Base end:	Welded steel mounts with bearings
Bore:	2", 2.5"
Stroke:	6" - 24"
Rod:	Standard chrome plated rod steel 1045
Pressure:	3500 PSI
Color:	Black

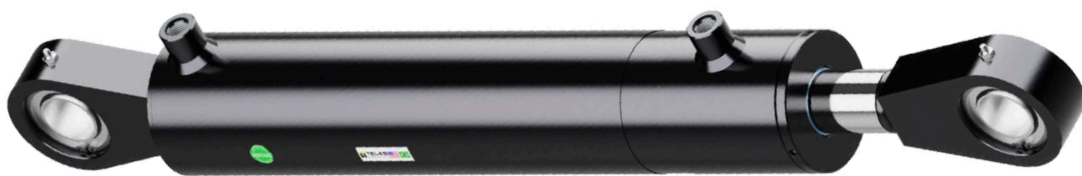
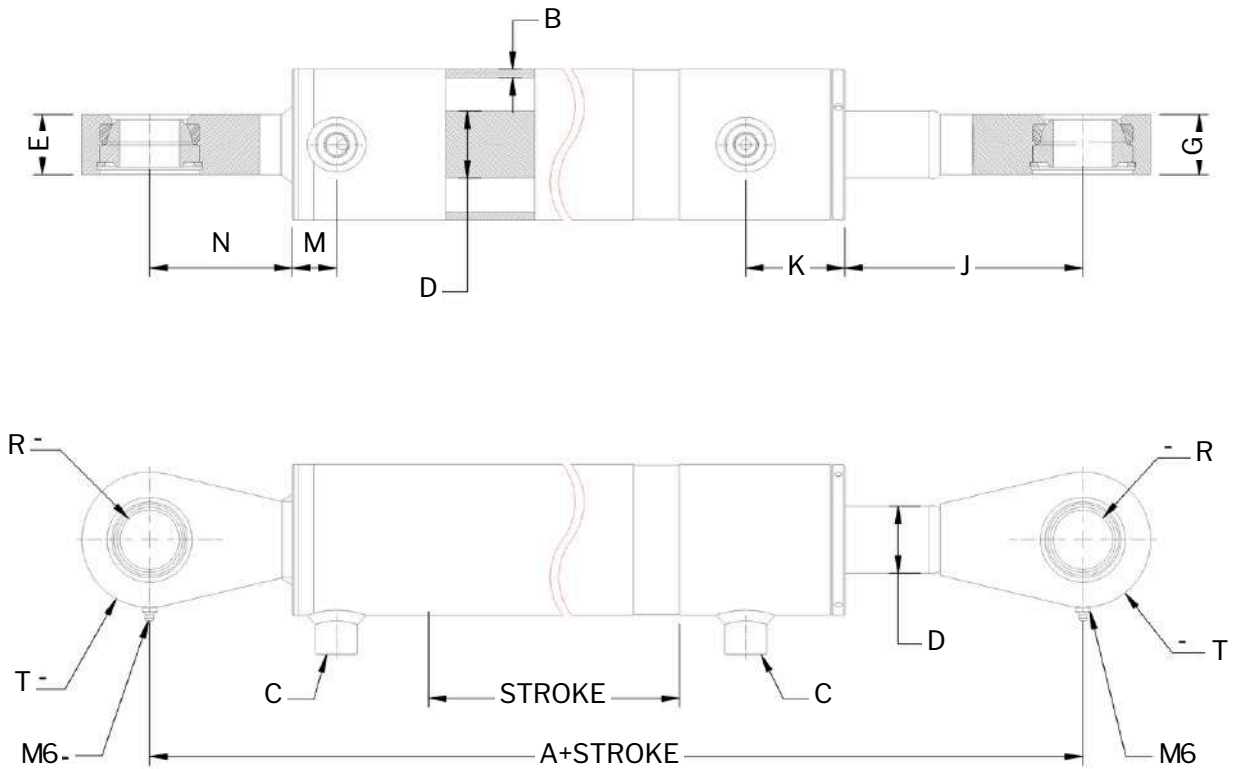




SWIVEL EYE WELDED - DOUBLE ACTING / 3500 PSI												
BORE	A	B	C	D	E	G	J	K	M	N	R	T
2"	10.0"	.187"	SAE 6	1.25"	1.1"	1.1"	3.07"	2.05"	.83	2.4"	1.0"	1.48"
2.5"	10.0"	.187"	SAE 8	1.5"	1.1"	1.1"	3.07"	2.05"	.83"	2.4"	1.0"	1.48"

2" BORE		SWIVEL EYE WELDED - DOUBLE ACTING / 3500 PSI								
SKU	BORE (INCH)	STROKE (INCH)	ROD Ø (INCH)	RETRACTED (INCH)	EXTENDED (INCH)	PIN Ø (INCH)	PORT SIZE	COLUMN LOAD	WEIGHT LBS	
US200012500006	2	6	1.25	16	22	1	SAE 6	9,400	15	
US200012500008	2	8	1.25	18	26	1	SAE 6	9,400	16	
US200012500010	2	10	1.25	20	30	1	SAE 6	9,400	17	
US200012500012	2	12	1.25	22	34	1	SAE 6	9,400	19	
US200012500014	2	14	1.25	24	38	1	SAE 6	9,400	21	
US200012500016	2	16	1.25	26	42	1	SAE 6	9,400	22	
US200012500018	2	18	1.25	28	46	1	SAE 6	9,400	24	
US200012500020	2	20	1.25	30	50	1	SAE 6	9,400	26	
US200012500024	2	24	1.25	34	58	1	SAE 6	8,400	28	

2.5" BORE		SWIVEL EYE WELDED - DOUBLE ACTING / 3500 PSI							
SKU	BORE (INCH)	STROKE (INCH)	ROD Ø (INCH)	RETRACTED (INCH)	EXTENDED (INCH)	PIN Ø (INCH)	PORT SIZE	COLUMN LOAD	WEIGHT LBS
US250015000006	2.5	6	1.5	16	22	1	SAE 6	14,700	19
US250015000008	2.5	8	1.5	18	26	1	SAE 6	14,700	21
US250015000010	2.5	10	1.5	20	30	1	SAE 6	14,700	23
US250015000012	2.5	12	1.5	22	34	1	SAE 6	14,700	25
US250015000014	2.5	14	1.5	24	38	1	SAE 6	14,700	27
US250015000016	2.5	16	1.5	26	42	1	SAE 6	14,700	28
US250015000018	2.5	18	1.5	28	46	1	SAE 6	14,700	31
US250015000020	2.5	20	1.5	30	50	1	SAE 6	14,700	33
US250015000024	2.5	24	1.5	34	58	1	SAE 6	12,200	36

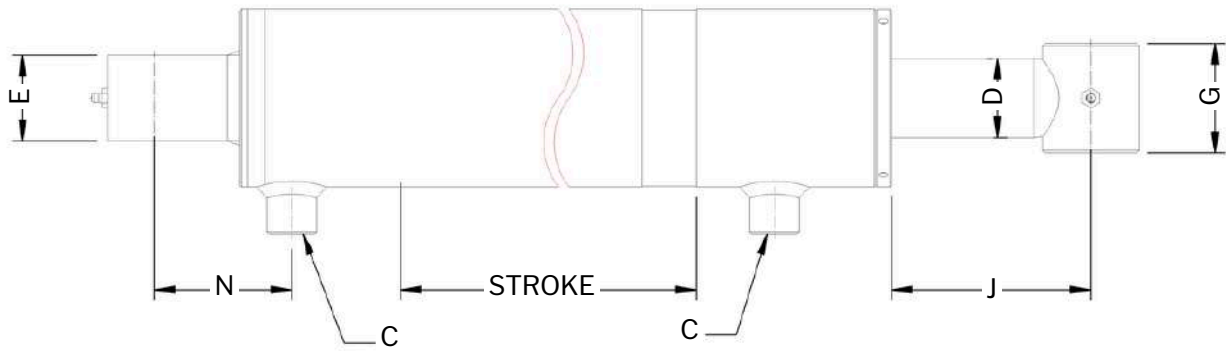
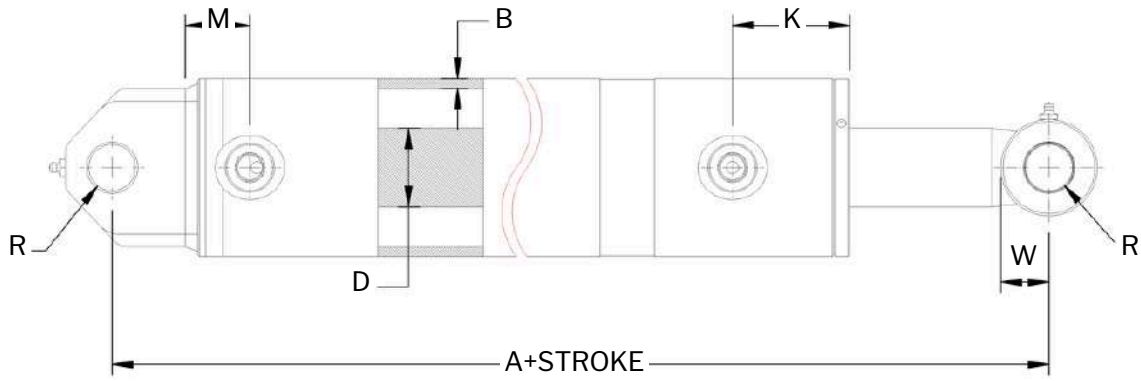


TANG

WELDED CYLINDER 3500 PSI

SPECIFICATIONS	
Type:	Welded hydraulic cylinder
Action:	Double acting
Rod End:	Welded narrow tube
Base end:	Welded steel tang mounts
Bore:	1.5" - 3"
Stroke:	6" - 30"
Rod:	Standard chrome plated rod steel 1045
Pressure:	3500 PSI
Color:	Black





TANG WELDED - DOUBLE ACTING / 3500 PSI												
BORE	A	B	C	D	E	G	J	K	M	N	W	R
1.5"	9.0"	.187"	SAE 6	1.0"	1.25"	1.25"	2.81"	2.17"	.83"	1.97"	.61"	.76"
2"	9.0"	.187"	SAE 6	1.25"	1.5"	1.5"	2.5"	2.05"	.83"	1.97"	.8"	1.02"
2.5"	9.0"	.187"	SAE 8	1.5"	1.5"	1.5"	2.5"	2.05"	.83"	1.97"	.8"	1.02"
3"	9.0"	.187"	SAE 8	1.5"	1.5"	1.5"	2.3"	2.13"	.83"	1.97"	.8"	1.02"



1.5" BORE		TANG WELDED - DOUBLE ACTING / 3500 PSI							
SKU	BORE (INCH)	STROKE (INCH)	ROD Ø (INCH)	RETRACTED (INCH)	EXTENDED (INCH)	PIN Ø (INCH)	PORT SIZE	COLUMN LOAD	WEIGHT LBS
US150010000006	1.5	6	1	15	21	0.75	SAE 6	5,300	9
US150010000008	1.5	8	1	17	25	0.75	SAE 6	5,300	10
US150010000010	1.5	10	1	19	29	0.75	SAE 6	5,300	11
US150010000012	1.5	12	1	21	33	0.75	SAE 6	5,300	12
US150010000014	1.5	14	1	23	37	0.75	SAE 6	5,300	13
US150010000016	1.5	16	1	25	41	0.75	SAE 6	5,300	14
US150010000018	1.5	18	1	27	45	0.75	SAE 6	5,300	15
US150010000020	1.5	20	1	29	49	0.75	SAE 6	5,300	16
US150010000022	1.5	22	1	31	53	0.75	SAE 6	4,620	17
US150010000024	1.5	24	1	33	57	0.75	SAE 6	4,210	19

2" BORE		TANG WELDED - DOUBLE ACTING / 3500 PSI							
SKU	BORE (INCH)	STROKE (INCH)	ROD Ø (INCH)	RETRACTED (INCH)	EXTENDED (INCH)	PIN Ø (INCH)	PORT SIZE	COLUMN LOAD	WEIGHT LBS
US200012500006	2	6	1.25	15	21	1	SAE 6	9,400	13
US200012500008	2	8	1.25	17	25	1	SAE 6	9,400	14
US200012500010	2	10	1.25	19	29	1	SAE 6	9,400	16
US200012500012	2	12	1.25	21	33	1	SAE 6	9,400	17
US200012500014	2	14	1.25	23	37	1	SAE 6	9,400	19
US200012500016	2	16	1.25	25	41	1	SAE 6	9,400	20
US200012500018	2	18	1.25	27	45	1	SAE 6	9,400	22
US200012500020	2	20	1.25	29	49	1	SAE 6	9,400	23
US200012500022	2	22	1.25	31	53	1	SAE 6	9,400	25
US200012500024	2	24	1.25	33	57	1	SAE 6	8,400	26
US200012500026	2	26	1.25	35	61	1	SAE 6	7,200	27
US200012500028	2	28	1.25	37	65	1	SAE 6	6,200	29
US200012500030	2	30	1.25	39	69	1	SAE 6	5,700	30



2.5" BORE		TANG WELDED - DOUBLE ACTING / 3500 PSI							
SKU	BORE (INCH)	STROKE (INCH)	ROD Ø (INCH)	RETRACTED (INCH)	EXTENDED (INCH)	PIN Ø (INCH)	PORT SIZE	COLUMN LOAD	WEIGHT LBS
US250015000006	2.5	6	1.5	15	21	1	SAE 8	14,700	18
US250015000008	2.5	8	1.5	17	25	1	SAE 8	14,700	20
US250015000010	2.5	10	1.5	19	29	1	SAE 8	14,700	22
US250015000012	2.5	12	1.5	21	33	1	SAE 8	14,700	24
US250015000014	2.5	14	1.5	23	37	1	SAE 8	14,700	26
US250015000016	2.5	16	1.5	25	41	1	SAE 8	14,700	28
US250015000018	2.5	18	1.5	27	45	1	SAE 8	14,700	30
US250015000020	2.5	20	1.5	29	49	1	SAE 8	14,700	32
US250015000022	2.5	22	1.5	31	53	1	SAE 8	14,700	33
US250015000024	2.5	24	1.5	33	57	1	SAE 8	14,700	35
US250015000026	2.5	26	1.5	35	61	1	SAE 8	13,700	37
US250015000028	2.5	28	1.5	37	65	1	SAE 8	12,700	39
US250015000030	2.5	30	1.5	39	69	1	SAE 8	11,700	41

3" BORE		TANG WELDED - DOUBLE ACTING / 3500 PSI							
SKU	BORE (INCH)	STROKE (INCH)	ROD Ø (INCH)	RETRACTED (INCH)	EXTENDED (INCH)	PIN Ø (INCH)	PORT SIZE	COLUMN LOAD	WEIGHT LBS
US300015000008	3	8	1.5	17	25	1	SAE 8	21,000	23
US300015000010	3	10	1.5	19	29	1	SAE 8	21,000	25
US300015000012	3	12	1.5	21	33	1	SAE 8	21,000	28
US300015000014	3	14	1.5	23	37	1	SAE 8	21,000	30
US300015000016	3	16	1.5	25	41	1	SAE 8	21,000	32
US300015000018	3	18	1.5	27	45	1	SAE 8	21,000	34
US300015000020	3	20	1.5	29	49	1	SAE 8	21,000	36
US300015000024	3	24	1.5	33	57	1	SAE 8	18,000	40
US300015000030	3	30	1.5	39	69	1	SAE 8	12,200	47

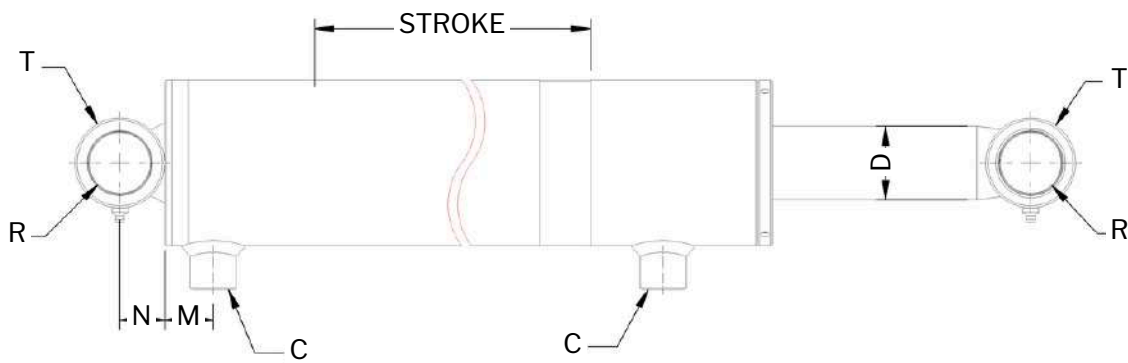
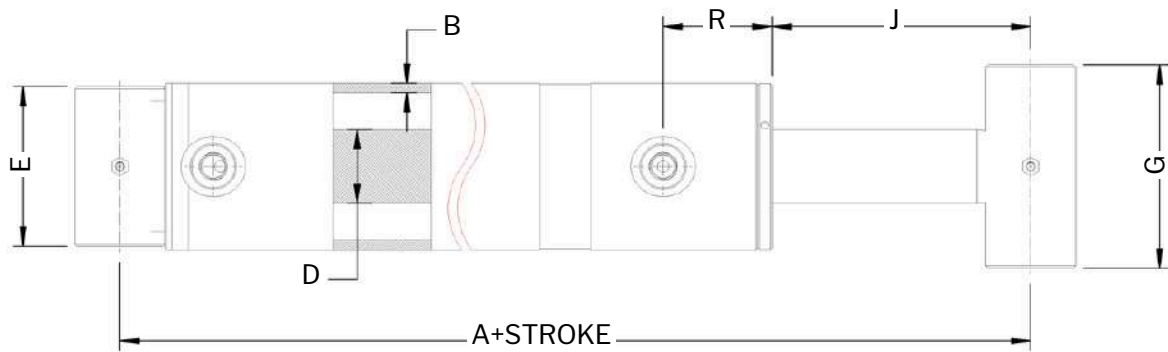


LOADER

WELDED CYLINDER 3500 PSI

SPECIFICATIONS	
Type:	Welded hydraulic cylinder
Action:	Double acting
Rod End:	Wide cross-tube steel welded end
Base end:	Cross-tube high tensile steel end mounts
Bore:	1.75" - 2.5"
Stroke:	14" - 23.5"
Rod:	Standard chrome plated rod steel 1045
Pressure:	3500 PSI
Color:	Black





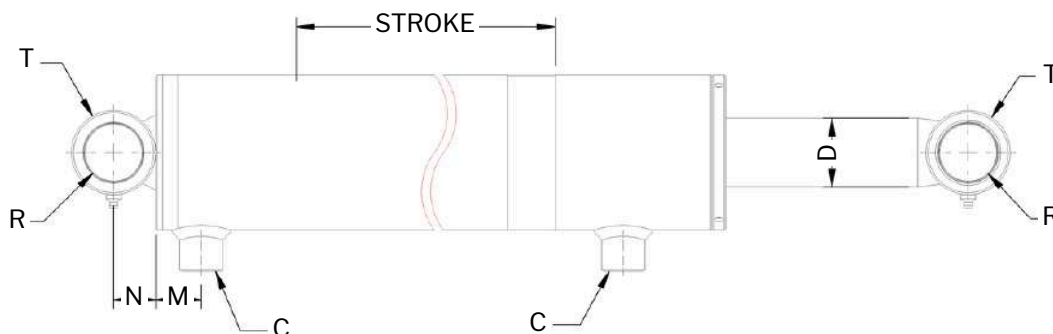
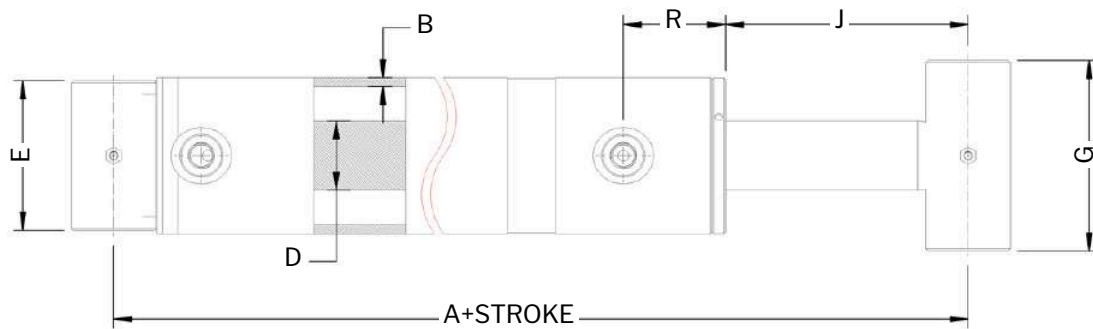
LOADER WELDED - DOUBLE ACTING / 3500 PSI												
BORE	A	B	C	D	E	G	J	K	M	N	R	T
1.75"	VARIABLE	.19"	SAE 6	1.0"	2.13"	3.0"	VARIABLE	2.16"	.7"	.73"	1.01"	1.5"
2"	VARIABLE	.19"	SAE 6	1.25"	2.38"	2.76"	VARIABLE	2.05"	.7"	.98"	1.26"	2.0"
2.5"	VARIABLE	.19"	SAE 8	1.5"	2.87"	3.5"	VARIABLE	2.0"	.7"	.98"	1.26"	2.0"



1.75" Bore		LOADER WELDED - DOUBLE ACTING / 3500 PSI							
SKU	BORE (INCH)	STROKE (INCH)	ROD Ø (INCH)	RETRACTED (INCH)	EXTENDED (INCH)	PIN Ø (INCH)	PORT SIZE	COLUMN LOAD	WEIGHT LBS
US175010000014	1.75	14	1	28.5	42.5	1	SAE 6	5,150	16
US175010000018	1.75	18	1	27.25	42.25	1	SAE 6	5,150	17

2" BORE		LOADER WELDED - DOUBLE ACTING / 3500 PSI							
SKU	BORE (INCH)	STROKE (INCH)	ROD Ø (INCH)	RETRACTED (INCH)	EXTENDED (INCH)	PIN Ø (INCH)	PORT SIZE	COLUMN LOAD	WEIGHT LBS
US200012501925	2	19.25	1.25	26.875	46.125	1.25	SAE 6	9,400	23
US200012501925A	2	19.25	1.25	26.375	46.125	1.25	SAE 6	9,400	23
US200012502275	2	22.75	1.25	29.875	52.625	1.25	SAE 6	9,400	25

2.5" BORE		LOADER WELDED - DOUBLE ACTING / 3500 PSI							
SKU	BORE (INCH)	STROKE (INCH)	ROD Ø (INCH)	RETRACTED (INCH)	EXTENDED (INCH)	PIN Ø (INCH)	PORT SIZE	COLUMN LOAD	WEIGHT LBS
US250015001825	2.5	18.25	1.5	31.75	50	1.25	SAE 8	14,700	33
US250015000235	2.5	23.5	1.5	34	57.5	1.25	SAE 8	14,700	36

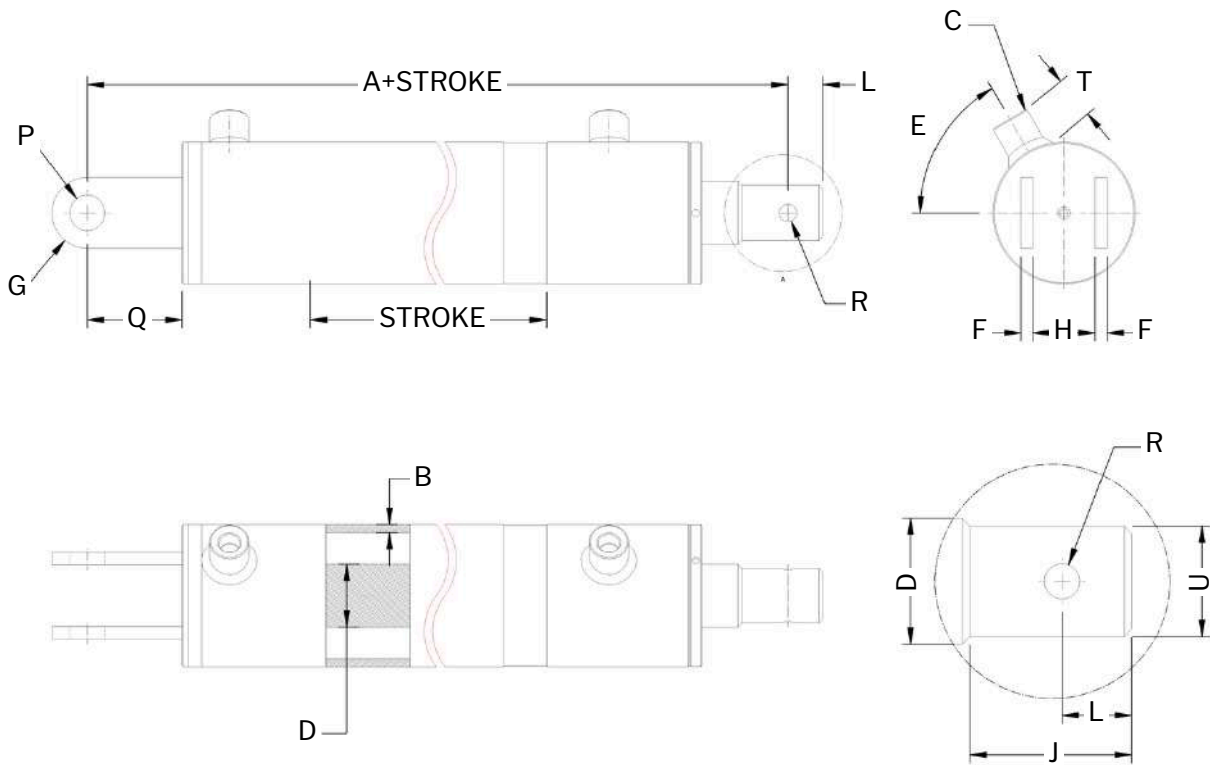


LOG SPLITTER

WELDED CYLINDER 3500 PSI

SPECIFICATIONS	
Type:	Welded hydraulic cylinder
Action:	Double acting
Rod End:	Drilled pin-hole
Base end:	Welded clevis mount
Bore:	4", 5"
Stroke:	24", 30"
Rod:	Standard chrome plated rod steel 1045
Pressure:	3500 PSI
Color:	Black





LOG SPLITTER WELDED - DOUBLE ACTING / 3500 PSI

BORE	STROKE	A	B	C	D	E	F	G	H	J	L	N	P	Q	R	S	T	U
4"	24	10.5	0.25	1/2-14 NPT	1.75	45°	0.375	2.25	0.875	2.56	1.063	1.125	1.125	3	0.563	4.5	0.75	1.75
4"	30	10.5	0.25	1/2-14 NPT	1.75	45°	0.375	2.25	0.875	2.56	1.063	1.125	1.125	3	0.563	4.5	0.75	1.75
5"	24	10.5	0.25	1/2-14 NPT	2	45°	0.375	2.25	0.875	2.56	1.063	1.125	1.125	3	0.563	4.5	0.75	1.75
5"	30	10.5	0.25	1/2-14 NPT	2	45°	0.375	2.25	0.875	2.56	1.063	1.125	1.125	3	0.563	4.5	0.75	1.75

4" BORE

LOG SPLITTER WELDED - DOUBLE ACTING / 3500 PSI

SKU	BORE (INCH)	STROKE (INCH)	ROD Ø D (INCH)	RETRACTED (INCH)	EXTENDED (INCH)	PIN Ø (INCH)	PIN Ø (ROD)	PORT SIZE	COLUMN LOAD	WEIGHT LBS
US400017500024	4	24	1.75	34.5	58.5	1.125	0.5625	1/2 NPT	36,000	67
US400017500030	4	30	1.75	40.5	70.5	1.125	0.5625	1/2 NPT	36,000	75

5" BORE

LOG SPLITTER WELDED - DOUBLE ACTING / 3500 PSI

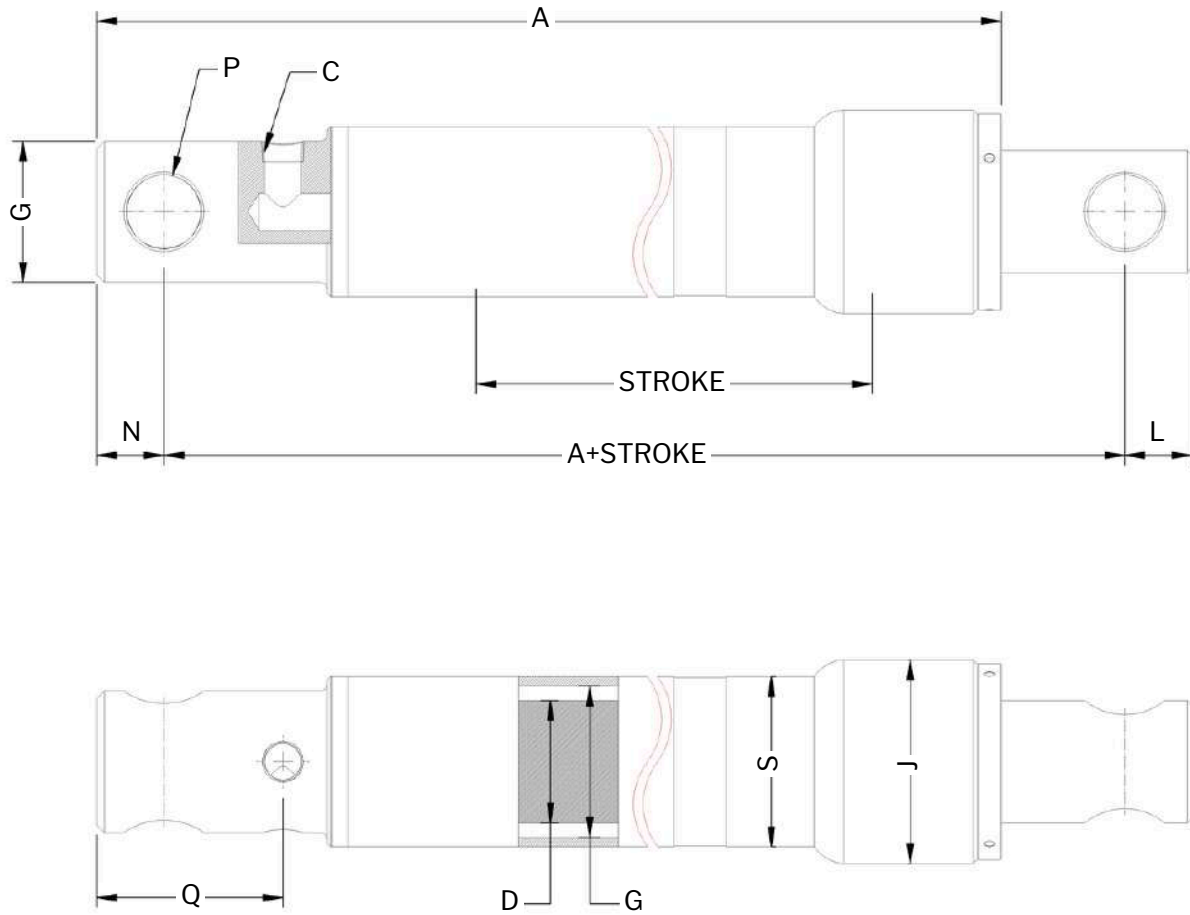
SKU	BORE (INCH)	STROKE (INCH)	ROD Ø D (INCH)	RETRACTED (INCH)	EXTENDED (INCH)	PIN Ø (INCH)	PIN Ø (ROD)	PORT SIZE	COLUMN LOAD	WEIGHT LBS
US500020000024	5	24	2	34.5	58.5	1.125	0.5625	1/2 NPT	58,900	89
US500020000030	5	30	2	40.5	70.5	1.125	0.5625	1/2 NPT	58,900	103

SNOW PLOW

WELDED CYLINDER 2500 PSI

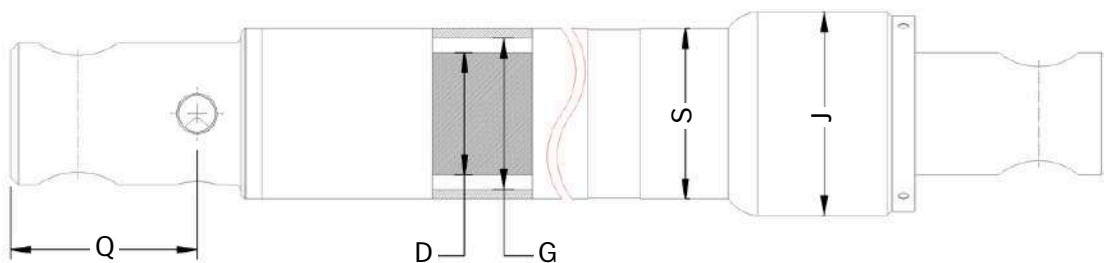
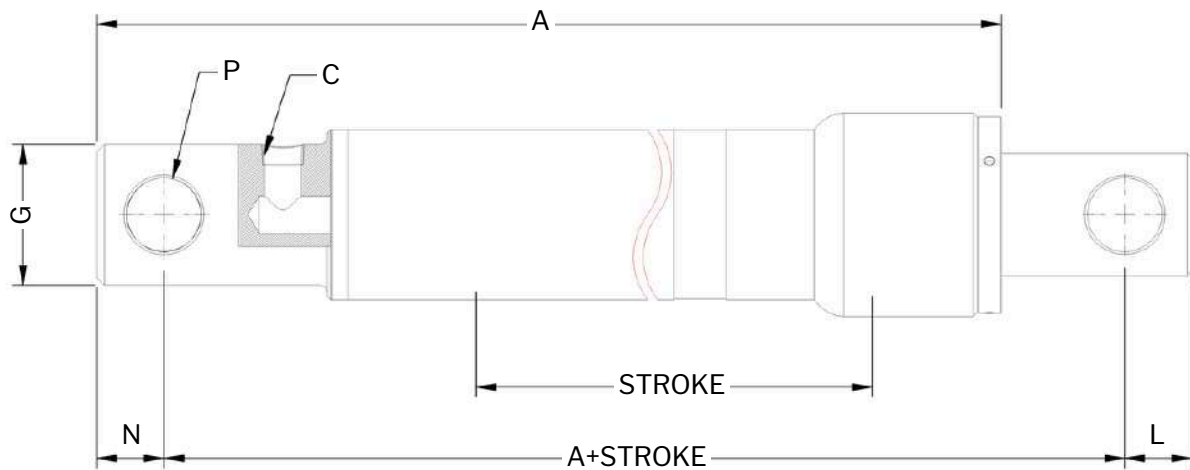
SPECIFICATIONS	
Type:	Welded hydraulic cylinder
Action:	Single acting
Bore:	1.5", 2"
Stroke:	6" - 16"
Rod:	Standard chrome plated rod steel 1045
Pressure:	2500 PSI
Color:	Black



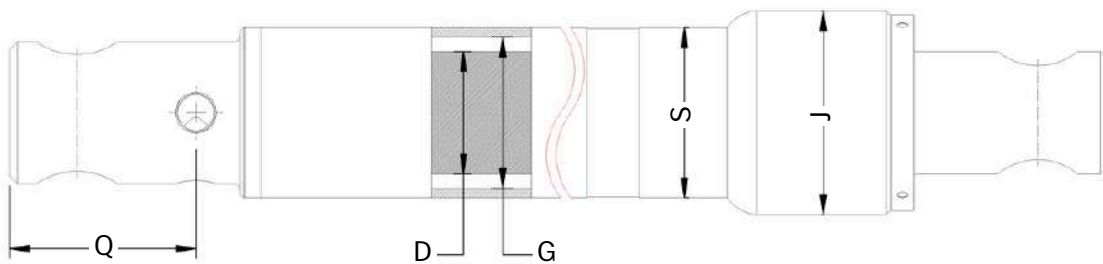
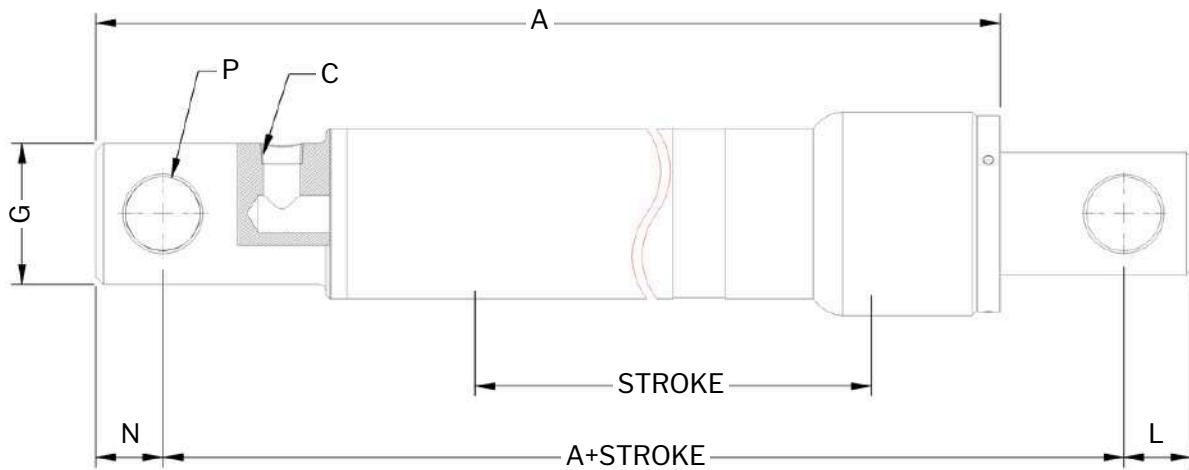


SNOW PLOW WELDED - SINGLE ACTING / 2500 PSI												
BORE	STROKE	A	B	C	D	G	J	L	N	P	Q	S
1.5"	6	6	0.18	1/4-18 NPT	1.50	1.75	1.5	0.67	0.67	0.62	2	2.125
1.5"	6	7	0.18	1/4-18 NPT	1.50	1.75	1.75	0.67	0.67	0.75	2.75	2.125
1.5"	8	7.25	0.18	1/4-18 NPT	1.50	1.75	8.63	0.67	0.67	0.75	2.75	2.125
1.5"	10	6.25	0.18	1/4-18 NPT	1.50	1.75	10.38	0.67	0.67	0.62	2	2.125
1.5"	10	7.25	0.18	1/4-18 NPT	1.50	1.75	10.63	0.75	0.75	1	2.75	2.125
1.5"	10	7.25	0.18	1/4-18 NPT	1.50	1.75	10.63	0.67	0.67	0.75	2.75	2.125
1.5"	10	7.5	0.18	1/4-18 NPT	1.50	1.75	10.88	0.67	0.67	1	2.75	2.125
1.5"	12	6	0.18	1/4-18 NPT	1.50	1.75	12.13	0.67	0.67	0.62	2	2.125
1.5"	12	7.37	0.18	1/4-18 NPT	1.50	1.75	12.94	0.75	0.75	1	2.62	2.125
2"	10	7.25	0.25	1/4-18 NPT	2	2.25	2	0.67	0.67	1	2.75	2.5
2"	16	7.25	0.25	1/4-18 NPT	2	2.25	2.5	0.87	0.87	1.25	2.75	2.5
2"	16	7.62	0.25	1/4-18 NPT	2	2.25	2.37	0.67	0.67	1	2.75	2.5

1.5" Bore		SNOW PLOW WELDED - SINGLE ACTING / 2500 PSI									
SKU	BORE (INCH)	STROKE (S) INCH	ROD Ø (INCH)	RETRACTED (B) INCH	EXTENDED (INCH)	PIN Ø (D) INCH	PORT SIZE (INCH)	A	C	E	WEIGHT LBS
US175015000006	1.75	6	1.5	12	18	0.625	1/4 NPT	11.875	0.6875	2	11
US175015000006A	1.75	6	1.5	13	19	0.75	1/4 NPT	12.625	0.6875	2.75	11
US175015000008	1.75	8	1.5	15.25	23.25	0.75	1/4 NPT	14.625	0.6875	2.75	13
US175015000010	1.75	10	1.5	16.25	26.25	0.625	1/4 NPT	15.875	0.6875	2	15
US175015000010A	1.75	10	1.5	17.25	27.25	1	1/4 NPT	16.625	0.75	2.75	15
US175015000010B	1.75	10	1.5	17.25	27.25	0.75	1/4 NPT	16.625	0.6875	2.75	15
US175015000010C	1.75	10	1.5	17.5	27.5	1	1/4 NPT	16.625	0.6875	2.75	15
US175015000012	1.75	12	1.5	18	30	0.625	1/4 NPT	17.875	0.6875	2	16
US175015000012A	1.75	12	1.5	19.375	31.375	1	1/4 NPT	18.438	0.75	2.625	17



2.25" BORE		SNOW PLOW WELDED - SINGLE ACTING / 2500 PSI									
SKU	BORE (INCH)	STROKE (S) INCH	ROD Ø (INCH)	RETRACTED (B) INCH	EXTENDED (INCH)	PIN Ø (D) INCH	PORT SIZE (INCH)	A	C	E	WEIGHT LBS
US225020000010	2.250	10	2	17.25	27.25	1	1/4 NPT	16.625	0.6875	2.75	23
US225200000016	2.250	16	2	23.25	39.25	1.25	1/4 NPT	22.5	0.875	2.75	32
US225200000016A	2.250	16	2	23.625	39.625	1	1/4 NPT	22.625	0.6875	2.75	32

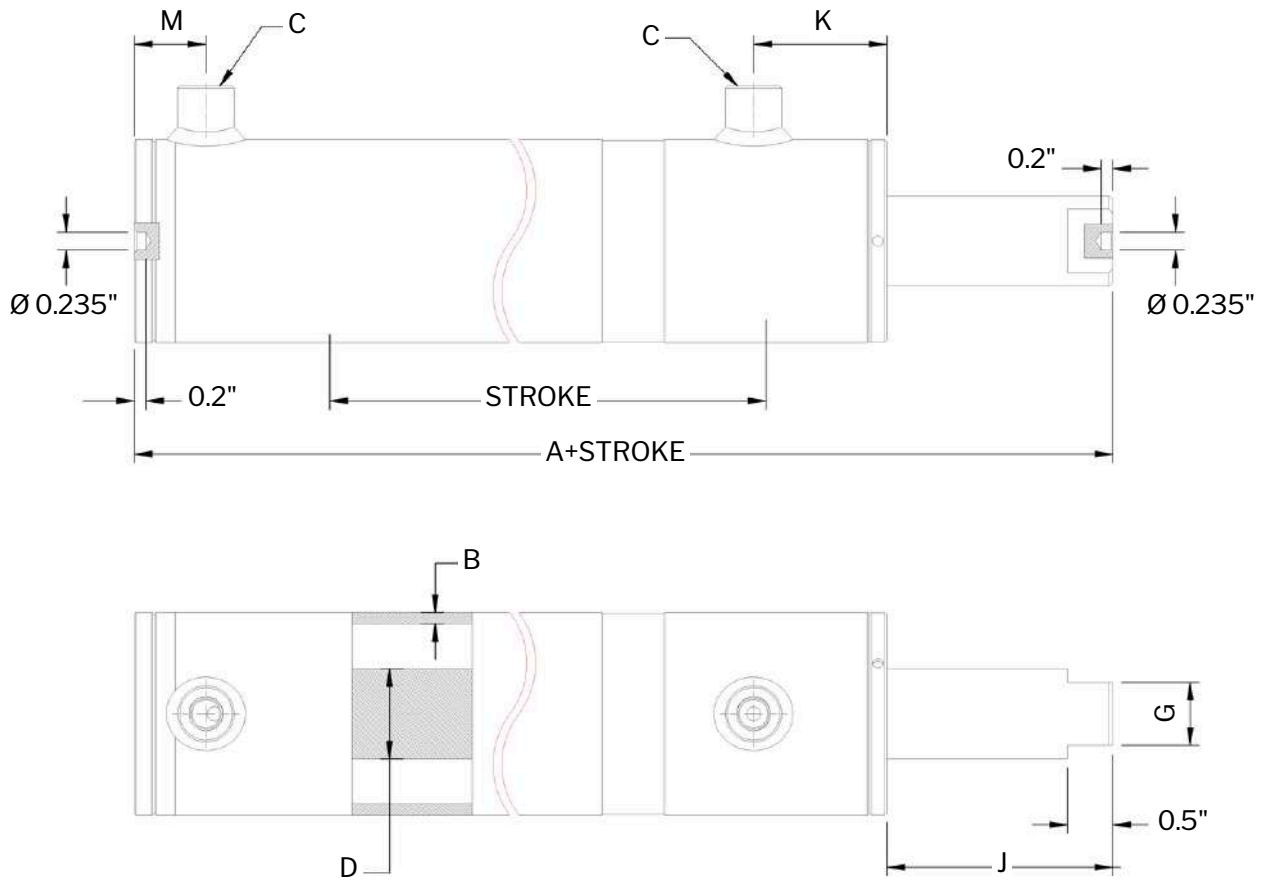


UNIVERSAL

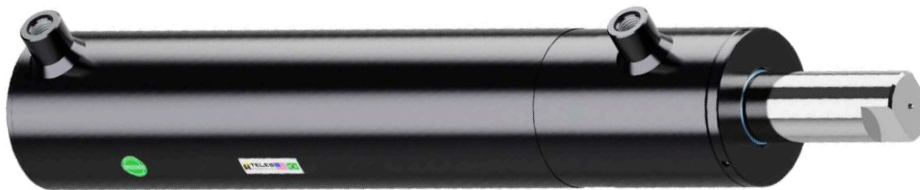
WELDED CYLINDER 3500 PSI

SPECIFICATIONS	
Type:	Welded hydraulic cylinder
Action:	Double acting
Base End & Rod End:	Option for mounting various ends such as cross tubes, clevis, etc.
Bore:	2", 2.5"
Stroke:	8" - 24"
Rod:	Standard chrome plated rod steel 1045
Pressure:	3500 PSI
Color:	Black

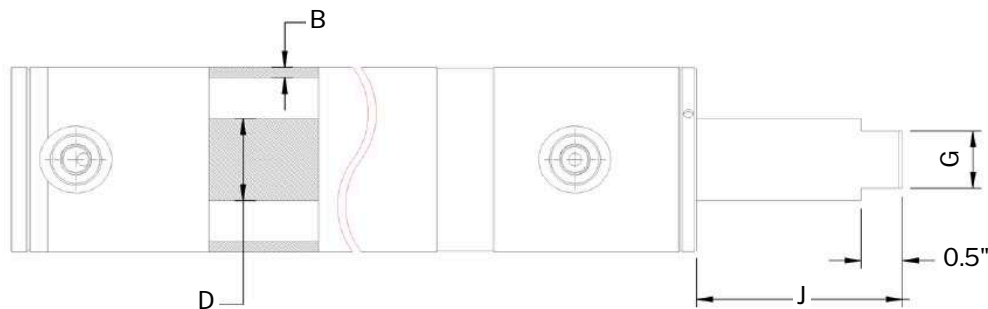
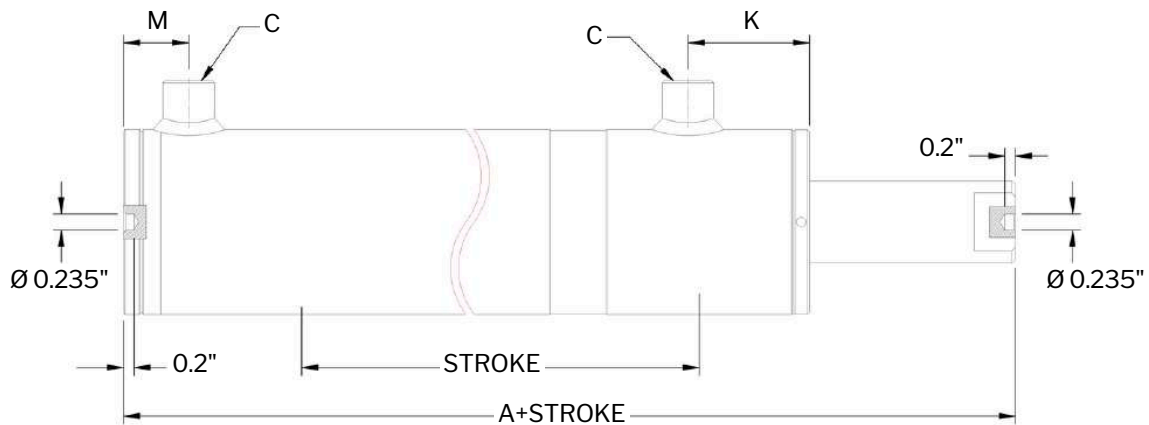




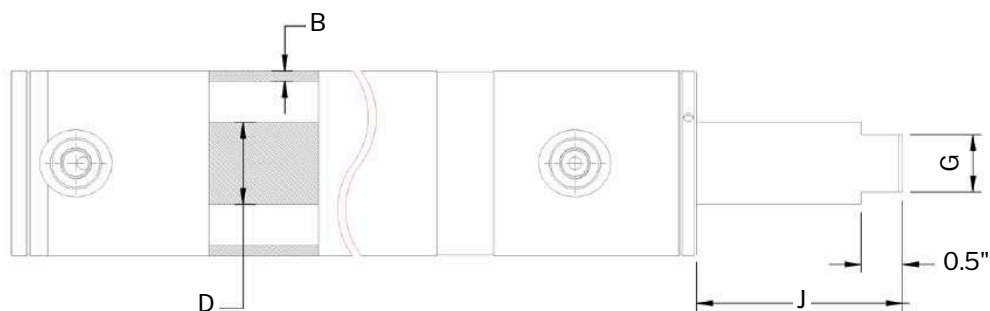
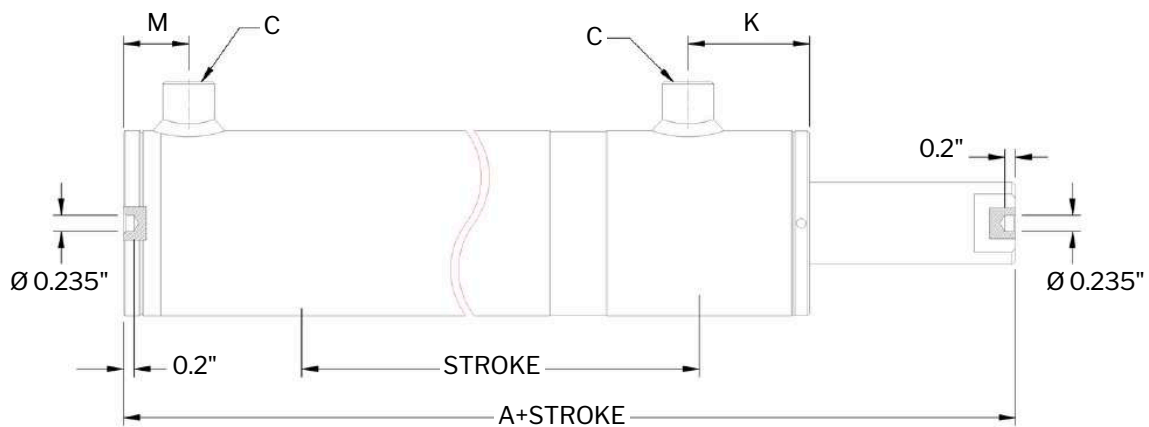
WELDED DOUBLE ACTING UNIVERSAL / 3500 PSI								
BORE	A	B	C	D	G	J	K	T
2"	7.0"	.19"	SAE 6	1.25"	1.13"	2.125"	2.05"	1.0"
2.5"	7.0"	.19"	SAE 8	1.5"	1.41"	2.125"	2.05"	1.0"



2" BORE		WELDED DOUBLE ACTING UNIVERSAL / 3500 PSI						
SKU	BORE (INCH)	STROKE (INCH)	ROD Ø (INCH)	RETRACTED (INCH)	EXTENDED (INCH)	PORT SIZE	COLUMN LOAD	WEIGHT LBS
US200012500008	2	8	1.25	15	23	SAE 6	9,4	12
US200012500009	2	9	1.25	16	25	SAE 6	9,4	13
US200012500010	2	10	1.25	17	27	SAE 6	9,4	14
US200012500011	2	11	1.25	18	29	SAE 6	9,4	14
US200012500012	2	12	1.25	19	31	SAE 6	9,4	15
US200012500013	2	13	1.25	20	33	SAE 6	9,4	16
US200012500014	2	14	1.25	21	35	SAE 6	9,4	16
US200012500015	2	15	1.25	22	37	SAE 6	9,4	17
US200012500016	2	16	1.25	23	39	SAE 6	9,4	18
US200012500017	2	17	1.25	24	41	SAE 6	9,4	19
US200012500018	2	18	1.25	25	43	SAE 6	9,4	19
US200012500019	2	19	1.25	26	45	SAE 6	9,4	20
US200012500020	2	20	1.25	27	47	SAE 6	9,4	21
US200012500021	2	21	1.25	28	49	SAE 6	8,8	21
US200012500022	2	22	1.25	29	51	SAE 6	8,8	22
US200012500023	2	23	1.25	30	53	SAE 6	8,6	23
US200012500024	2	24	1.25	31	55	SAE 6	8,4	23



2.5" BORE		WELDED DOUBLE ACTING UNIVERSAL / 3500 PSI						
SKU	BORE (INCH)	STROKE (INCH)	ROD Ø (INCH)	RETRACTED (INCH)	EXTENDED (INCH)	PORT SIZE	COLUMN LOAD	WEIGHT LBS
US250015000008	2.5	8	1.5	15	23	SAE 8	14,7	16
US250015000009	2.5	9	1.5	16	25	SAE 8	14,7	17
US250015000010	2.5	10	1.5	17	27	SAE 8	14,7	18
US250015000011	2.5	11	1.5	18	29	SAE 8	14,7	19
US250015000012	2.5	12	1.5	19	31	SAE 8	14,7	20
US250015000013	2.5	13	1.5	20	33	SAE 8	14,7	21
US250015000014	2.5	14	1.5	21	35	SAE 8	14,7	22
US250015000015	2.5	15	1.5	22	37	SAE 8	14,7	23
US250015000016	2.5	16	1.5	23	39	SAE 8	14,7	24
US250015000017	2.5	17	1.5	24	41	SAE 8	14,7	25
US250015000018	2.5	18	1.5	25	43	SAE 8	14,7	25
US250015000019	2.5	19	1.5	26	45	SAE 8	14,7	26
US250015000020	2.5	20	1.5	27	47	SAE 8	14,7	27
US250015000021	2.5	21	1.5	28	49	SAE 8	14,7	28
US250015000022	2.5	22	1.5	29	51	SAE 8	14,7	29
US250015000023	2.5	23	1.5	30	53	SAE 8	14,7	30
US250015000024	2.5	24	1.5	31	55	SAE 8	14,7	31



VARIED, VERSATILE AND WITH



THE CUSTOMIZATION YOU NEED



ROBUST, COMPLEX



AND ELABORATED









TELES HYDRAULICS

**QUALITY AND SAFETY,
YOU FIND HERE!**

www.teleshydraulics.com

Email: sales@teleshydraulics.com

Phone number +55 (44) 9 8840-4284

2101 Park Center Drive #150, Orlando, FL 32835



SAVE OUR CONTACT INFORMATION!

